



Geraldton Sunshine Festival Programme

(1961)

A digitizing project conducted by the
Geraldton Regional Library
2014



PHILIPS
ALL TRANSISTOR PORTABLE
Designed for the Push-Button Age



Miraculous performance at your finger tips
PRICED AT £44/12/-

NICHOLSONS

GOOD PEOPLE TO DEAL WITH!

Marine Terrace, Geraldton (Tel. 91)

Geraldton Newspapers Limited Print

5 11
Sunshine Festival

ERALDTON
WESTERN AUSTRALIA

THE PROGRAMME
PRICE 2/-

PUBLIC

MARQUIS MOTEL, GERALDTON



IDEALLY SUITED FOR AN ALL-FAMILY

Private Hot and Cold Shower, Wash Basin and
CHILDREN'S PLAYGROUND—PARK AREA

Units for two, three, four or five persons

MODERN DINING ROOM—DEFINITELY BETTER ACCOMMODATION

Marquis Motels also at Perth and Bunbury



GERALDTON

Library and Information
Service

BOOKS . . .

- . . . for pleasure
- . . . for education
- . . . for information

L 317

Geraldton

994.1.

Sunshine

Festival



Nine days of Festivities, organised to attract tourists, and thus popularise Geraldton as the most favoured all-year-round holiday resort in Western Australia



.....
AUGUST 26th to SEPTEMBER 3rd, 1961
.....

FOUNTAIN'S CHEMIST

MARINE TERRACE PHARMACY

Geraldton's Leading Pharmacy

PHONE 16

NEXT TO FREECORNS

Sole Agents—

ELIZABETH ARDEN COSMETICS

CYCLAX COSMETICS

INNOXA COSMETICS

STEINER HAIR PREPARATIONS

OLD SPICE—FOR MEN

**THE LARGEST PHOTOGRAPHIC
SUPPLIER IN GERALDTON**

CHEMIST

OFFICIALS

Chairman :

HIS WORSHIP THE MAYOR, MR. C. S. EADON-CLARKE, J.P.

Vice-President :

MR. W. B. GEORGE

Secretary-Organiser :

MR. F. P. WATT

Executive Committee :

Chairman Programme Committee Mr. C. W. Mildwaters

Chairman Finance Committee Mr. F. J. Hacket

Chairman Accommodation Committee Mrs. J. Heinsen

Chairman Publicity Committee Mr. W. Marsh

Chairman Decoration Committee Mr. J. O. Wesley

Members of Committees :

Programme—Messrs. C. Mildwaters, F. Winfield, A. Ward, M. McGelenchy, A. Gummery and R. Page

Accommodation—Mrs. J. Heinsen, Miss Shaw, Mrs. Saffrey and Mrs. V. Davies

Finance—Messrs. F. J. Hacket, C. H. Penniment, C. B. Clarke and H. F. Grosse

Publicity—Messrs. W. Marsh, J. Spendlove, R. Tilley, K. Bunn and Mrs. Huggins

Decorations—Messrs. J. O. Wesley, J. Plasto, T. Jansen, W. Winch-Buist, R. Bruce and J. Brown

A cordial invitation is extended to you
to visit

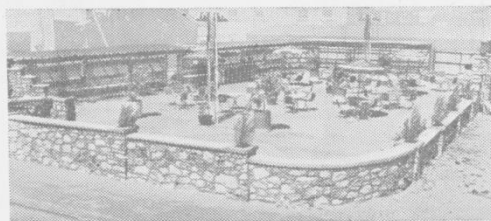
Shepherd's Hotel



LOUNGE AND COCKTAIL BAR

Situated at the
corner of
Marine Terrace
and
Cathedral Avenue,
Geraldton

Conducted under
the personal
supervision of
Mr. and Mrs. Len
Shepherd



BEER GARDEN

PRIVATE
PARTIES
OUR
SPECIALTY



DINING ROOM

Hot and Cold Water in All Rooms

FOR A WIDE RANGE OF FINE COSMETICS

See

Sallur's Pharmacy

Lorraine S. Sallur, M.P.S.

Agents for the Renowned
REVLON COSMETICS

Cosmetic Consultant Miss Alina Boryczewski in
attendance

IT'S SALLUR'S PHARMACY FOR FRIENDLY SERVICE

Telephone 909—All Hours

DIAMOND
RINGS



N. OGDEN & SON

THE FAMILY JEWELLERS OF GERALDTON

Choice Selection of Festival Souvenirs
Service, Civility and Efficiency
at all times

Our name your guarantee

Geraldton's OWN Family Jewellers

166 MARINE TERRACE ——— NEXT TO YOUNG MOTORS
Telephone 731—After Hours, Bluff Point 210

SOUVENIRS!

Comprehensive Range of Folder and Post-Card Views in black and white and colour. Also a comprehensive range of Souvenir Novelties

★

HOLIDAY READING

Select yours from the wonderful range always on hand at Geraldton's Leading Newsagent and Bookseller—

Rocks Stationers Hall

GERALDTON (Opposite Post-Office)

Step into Style

With Shoes From

Wright's Shoe Salon

★

MARINE TERRACE, GERALDTON

★

Telephone 687

SHORT HISTORICAL SURVEY

By NIGEL E. HAINES

(Manager of the Geraldton Branch of the Bank of New South Wales)

Geraldton is situated on the West Australian coast 312 miles north of Perth and is the second largest port in the State.

The district was originally examined by Lieutenant (later Sir George) Grey in 1839, but it was not until a party under A. C. Gregory discovered lead deposits near the Murchison River, seventy miles north of Geraldton, in 1848, that attention was centred on the settlement which was named Gerald Town after the then Governor, Sir Charles Fitzgerald. The town was surveyed and the first blocks sold in 1850.

The output of the lead mines, worked by Cornish miners and a few convicts, was first shipped from Port Gregory, forty miles north of Geraldton, but owing to losses of boats and men on the dangerous reefs outside the harbour this port was closed in 1861 and the ore transported overland to Geraldton. The need for quicker handling was the main reason for the building of Western Australia's first railway in 1879. It ran from Geraldton to Northampton, thirty miles north, and attention was soon focused on the rich farming country through which it passed.

Geraldton to-day is the port for a highly productive hinterland known as the Victoria Districts, comprising an area of about 24,000 square miles with a population of approximately 22,000. During the last ten years farming here has made tremendous strides, the number of sheep carried increasing from 854,459 to 1,587,874 and fat lamb production from 184,532 to 420,478. With the successful establishment of clover in the area, the permanent pasture has increased from 74,193 acres to 325,520 acres and cleared land from 1,926,922 acres to 3,040,925 acres. Large tracts of undeveloped land still remain, but these are rapidly attracting the attention of men and capital from all parts of the Commonwealth. The population of the Town of Geraldton and Shire Council has increased from 5,972 in 1947 to the present figure of 11,000.

As a wheat producer, this area holds a foremost place in Western Australia and last year the Victoria Districts yielded approximately 10,070,000 bushels from 551,000 acres. Barley and oats are also grown in large quantities. To help accommodate the huge quantities of grain stored for shipment each season, a concrete silo has now been completed at a cost of £1,400,000. It will be the largest in Australia with a capacity of 2,000,000 bushels.

The port facilities are very good and ships from all over the world use the modern wharf for loading wheat, sheep, crayfish, tomatoes, wool, manganese ore and lead, as well as for landing phosphate rock, petroleum products and general merchandise.

Although sheep and wheat constitute the backbone of the economy, the district has other supporting industries, of which the chief are crayfishing and tomato growing.

The fishing fleet is a big dollar earner and shipments of locally processed cray tails to America return approximately 1,500,000 dollars per annum. The fishing grounds are mainly the waters surrounding a group of islands known as the Houtman Abrolhos, lying some forty

MILLARS TIMBER

JARRAH KARRI

AVAILABLE AT GERALDTON

Recommended for all Building Work
Truck Lots ex Mill if Required

"EVERYTHING FOR BUILDING"

Joinery—Floorings (T. & G.) Weatherboards—
Linings — Mouldings — Cement — Lime —
Asbestos Sheets—Plasterboards—Galvanised Iron
— Corrugated Asbestos Roofing — Wire Nails —
Galvanised Nails

MANUFACTURERS OF WIRE NAILS

SEE OUR DISPLAY OF MASONITE

Agents in W.A. for Masonite — the Wonder Board
—Bergee Breeze M/M Paints and Enamels
Roby's All-Metal Awnings

Always Available :

STOVES, BATHS, COPPERS AND STANDS
Baltic Pine (all sizes) — Softwood Packs — Boat
Plys — Plywood, 6ft. 8in. x 2ft. 8in. x 3/16in.
7ft. x 3ft. x 3/16in. Softwood

ALL GENERAL HARDWARE STOCKED
SOFTWOODS IN GOOD SUPPLY
JARRAH CASES IN FREE SUPPLY

— ORDER FROM —

**MILLARS' TIMBER & TRADING
Co. Limited**

Tel. 34 ——— GERALDTON ——— Tel. 34
Manager ——— W. FRANKS ——— Tel. 257

HISTORICAL SURVEY

(CONTINUED)

to seventy miles off the coast. An archipelago of low barren coral outerops, they afford anchorage for the fishing fleet and carrier boats. The crews of these small boats, powered by sail and auxiliary engines, work hard at baiting, setting and hauling in the heavy cane, iron and wooden "pots" which are set near the reefs surrounding the islands.

Each day during the season (May to August) the carrier boats convey the catch to Geraldton, where the five processing factories, notified by radio of time of arrival, are ready to handle the catch. Once the bags of live cray are on the tray, they are hand graded ready for the production line. One man separates the body from the tail, while the packer wraps each one in grease-proof paper for immediate deep-freezing.

The tomato industry provides a livelihood for some 280 families, mainly of foreign extraction, and returns over £350,000 per annum. The main markets are Melbourne, Singapore and Perth.

Within a few miles of the town a superphosphate works, drawing its phosphate rock from Christmas Island in the Indian Ocean and sulphur from the Mexican Gulf, supplies the fertiliser needs of the area. A flour mill serves local demand as well as making frequent shipments to northern ports and to Singapore. A municipal abattoir and meat processing annexe are about to be erected.

The agricultural lands in the immediate vicinity of Geraldton are very varied in nature, ranging from the rich black soil of Greenough Flats, the heavy soils of the valleys, to the loamy gravel of the hillsides and lighter sandy soils of the plains. After climbing the gentle slopes of the Moresby Range, the road passes through Waggrakine Cutting, about six miles from the town. From here may be seen a wonderful panorama of valleys, broken by majestic hills of all shapes, seeming to have been formed by a giant sculptor rather than by natural upheavals. There are identical hills known as "The Sisters," another shaped like a perfect cone, and further away a series of hills so sharp and flat topped that they appear hand carved. In the intervening valleys lie rich fallow, green crops and lush pastures which, with the reflected purple hues from the hills, make a glorious picture.

Along this road, the ever-changing scenery is a delight to tourists, especially in spring time when the wildflowers are in profusion. On Greenough Flats, a few miles south of the town, is some of the richest land in the State. This abruptly gives way to snow white sandhills, a few chains wide and bare of vegetation, which stand on the shore of the blue Indian Ocean. At Greenough still stand the ruins of homes of Crimean War Veterans and pensioners, brought down after Port Gregory closed in 1860. Each pensioner was then given a small block of land and the area was at one time well populated. In 1890 there were three schools and three hotels to cater for the needs of some 2,000 people, but all these have since disappeared. The small holdings have been absorbed into large farms and all that remains are a few stone houses and St. James Anglican Church consecrated in 1874 by Bishop Hale.

Blessed with a very equable climate, with an average range of 19 degrees Fahrenheit and an average rainfall of 20 inches, Geraldton is rapidly becoming an all-the-year playground for tourists. In the summer months its delightful beaches attract lovers of sunshine from all parts of the State. Within the protection of the harbour are wonderfully clear, calm seas, lapping hard sand beaches along which



A View of our Modern Beer Garden

WHEN IN GERALDTON

Stop at the

FREEMASONS HOTEL

GOOD ACCOMMODATION AT
REASONABLE TARIFF
FIRST-CLASS BARS

AND

THE MOST MODERN WINTER
GARDEN NORTH OF
PERTH

HISTORICAL SURVEY (Continued)

cars may be driven at the water's edge. Here the youngest of children can disport themselves in shallow water in perfect safety. On the other side of the promontory, good surf caters for the more adventurous. During the past season, water ski-ing has become tremendously popular and from the main street one sees enthusiasts skimming the water behind a launch. Yachting is another very popular sport and each week-end the harbour is crowded with yachts of all classes. For the keen angler a fair variety of good fishing is available in the area.

In the wintertime many find the warm sunshine of Geraldton a welcome respite from the severity of more southern climates.

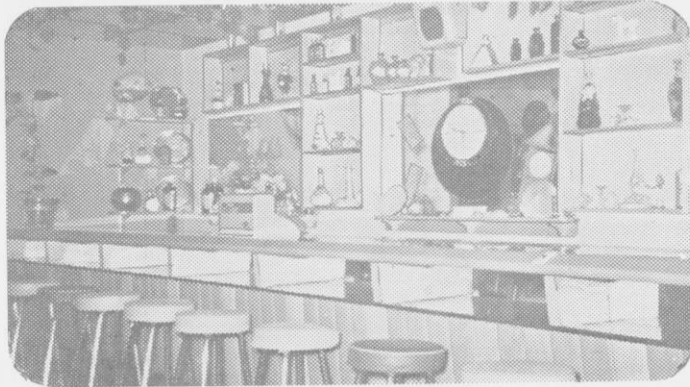
The town has nine hotels, four licensed clubs, a modern motel, holiday centre, two caravan parks and a number of good guest houses. Sporting clubs offer racing, bowling, golf, swimming, clay pigeon shooting and "go-kart" activity for local sportsmen, and tourists and visitors receive a warm welcome. There are two broadcasting stations and a newspaper is published three times a week.

Geraldton is well served by transport facilities, being connected with Perth by 312 miles of bitumen highway, two railways, daily passenger and freight road buses and daily air service. Water for the township is piped twenty-three miles from Wicherina Dam, claimed to have the largest roofed area in the Southern Hemisphere.

In the march of progress, most of Geraldton's early buildings have been demolished. The oldest public buildings are probably the Victoria District Hospital (built in 1857) and the Methodist Church (1863). These relics of an earlier day stand quietly in a busy modern town which is rapidly leaving its pioneering days behind.



Marine Terrace, Geraldton, at the turn of the century



New Cocktail Bar

RAILWAY HOTEL Phone 26
CONTACT THE DALY LOGUES FOR SUPERIOR
ACCOMMODATION FOR YOUR HOLIDAYS
Marine Terrace, Geraldton

WATCHCRAFT

THE RELIABLE WATCH AND CLOCK
REPAIRERS

ELEANOR STREET, GERALDTON
P. Purchase, Proprietor

M. G. & W. A. WORRALL

ELECTRICAL CONTRACTORS

Repairs and Installations, Domestic
or Industrial (old or new)

27 Marine Terrace, Geraldton — Telephone 678

Welcome to Geraldton

From

ERNIE'S Service Station

SOUTH GERALDTON



**We Offer You a 24-Hour
Shell Service**

Free Map of Geraldton with
Each Sale



Visit Tarcoola Beach

CARAVAN PARK

CHALETS

SNACKS



**FILL UP with SHELL on
Your Way Home**



Two Miles South of Geraldton
24-HOUR SERVICE

Ring Telephone 739
FOR SERVICE

Gordon Bishop's
MARINE MOTORS

- ★ LUKEY MUFFLERS
- ★ MERCURY OUTBOARD MOTORS
- ★ KLEENHEAT GAS
- ★ LODGE PLUGS
- ★ SOUTHERN UNION INSURANCE

A BP STATION

Message from the Mayor

(MR. C. S. EADON-CLARKE)



The present township of Geraldton—previously known as Champion on Champion Bay, is steeped in historical tradition. Interested visitors will find endless buildings and places in and around the town to delight them.

From the original settlers employed in lead mining at Northampton to the discovery of gold on the Murchison, the potential of the hinterland as a great agricultural area was recognised and as these valuable export commodities were developed the port of Geraldton provided all the services required by the rural population and expanded quickly to keep abreast of the need.

To-day we are served with communications by air, two railway systems, two bitumen road connections, and by sea with Fremantle and Perth to the south.

Agriculture and mining (lead, zinc, manganese, iron ore, copper) are maintaining rapid growth and expansion. The crayfish industry is experiencing the highest prices on record and the tomato industry and building trades are enjoying expanding business.

The healthy outdoor living enjoyed by all and shown in the year round sun-tanned children reflects the ideal conditions for all the family. Geraldton and district has been richly endowed and we welcome visitors at all times and are proud to show them our delightful district. You may accuse me of crowing about our assets, but surely we have something to crow about.

Many visitors come north annually with the knowledge that during each twelve months new development will have taken place, new enterprises started, new plans laid for future developments. They are not disappointed. To keep up with this rapid development the Town Council has recently agreed to build a new modern administrative and civic centre. The plans are worth studying and the building, when complete, will outshine any similar project in the State. The municipal authorities have also completed plans for a municipal abattoir which will be an incentive to our prosperous farming community to erect packing floors to develop an export meat industry with an eye to the markets to our north. New large sporting areas have been planned, the State Government has been urged to deepen approaches to the harbour, a new berth at the wharf is being planned for the expected requirements in connection with the export of iron ore from Tallering Peak. The Water Supply Department is spending many thousands of pounds to increase the water supply to the town. The long promised Regional Hospital plans are taking shape. The building trade, unlike some areas at present in Australia, is buoyant and buildings are being erected throughout the area.

This year you will see great new developments, particularly the towering new wheat silos at the wharf. Come again next year and we will have many additional achievements to prove to you that Geraldton can not only, each year, show you something new, but prove to you what a progressive and wealthy area this is in a glorious and expanding Western Australia.

Welcome to the Sunshine Festival, designed to please all the family. Happy Holidays!

C. S. EADON-CLARKE, Mayor.

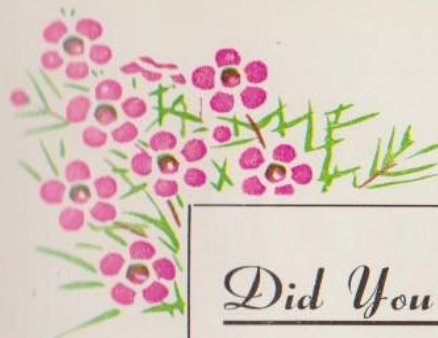


Geraldton's
Leading Department
Store extends a

WARM WELCOME TO VISITORS TO THE SUNSHINE FESTIVAL

With the rapid approach
of Spring and warmer
weather, new stocks of
Fashion Goods are arriving
daily.

● YOU ARE CORDIALLY INVITED TO
INSPECT OUR WIDE RANGE HERE AT
GERALDTON, and at all Foys other
Country Stores at Albany, Collie, Katanning,
Kojonup, Manjimup, Mt. Barker, Narrogin,
and Tambellup.



Did You Know?

That the **Midland Railway Company**
OF W.A. through its Road and Rail Services
between Perth and Geraldton last year
CARRIED NO LESS THAN 24,300 PASSENGERS
AND 282,000 TONS OF GOODS AND
LIVESTOCK.

IT PROVIDED EMPLOYMENT FOR 485
WORKERS, PAYING OUT £511,000 IN
WAGES.

The Midland Railway Co. of W.A. runs the
only private railway in Australia which
serves the general public in exactly the same
manner as do Government railways, and it
was the first railway in Australia to be
completely dieselized.

THE MIDLAND RAILWAY CO. OF W.A. is
proud of the fact that since 1894 it has
assisted materially in the development of one
of the most important areas of this State.



SERVES GERALDTON AND YOU!





**GOOD
NEWS**
Travels

FAST

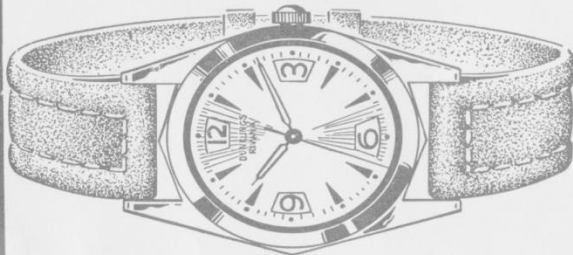


Come to
Willocks
SUNSHINE
FESTIVAL
FAIR



FESTIVAL SPECIAL

**NO OTHER WATCH
CAN COMPARE
FOR VALUE
DUNKLINGS "RIVANA"**



£8/10/-

Swiss
17-Jewelled Lever

WATER & DUST RESISTANT
INCABLOC SHOCK RESISTANT
UNBREAKABLE MAINSPRING
STEEL-BACK CHROMIUM CASE

OTHER RIVANAS—Imported steel-back case £15 and £16/10/-. Gold-filled front with steel-back £16/10/- and £17/10/.

You SAVE money when you pay CASH!

FOR WATCHES OF ALL LEADING MAKES

Dunklings

655 HAY STREET, PERTH
126 MARINE TER., GERALDTON

Telephone 335

P.O. Box 61

For Your Reference

The following information is listed so that you may keep it as a record for future use:—

HOTELS—

QUEEN'S HOTEL Durlacher Street
GREAT NORTHERN HOTEL Marine Terrace
GERALDTON HOTEL Gregory Street
SHEPHEARD'S HOTEL Marine Terrace
MURCHISON INN Eleanor Street
SHAMROCK HOTEL Fitzgerald Street
RAILWAY HOTEL Marine Terrace
VICTORIA HOTEL Marine Terrace
FREEMASONS HOTEL Marine Terrace

MOTELS—

MOTEL GERALDTON Bluff Point

COTTAGES—

BEACH COTTAGES West-End
SUNSHINE HOLIDAY CENTRE Near Lighthouse
TARCOOLA PARK CHALETs South Geraldton

GUEST HOUSES—

GRANTOWN HOUSE Marine Terrace
GERALDTON HOUSE Marine Terrace
OCEAN VIEW GUEST HOUSE Marine Terrace
ST. FRANCIS GUEST HOUSE Francis Street
ELEANOR GUEST HOUSE Eleanor Street
ST. GEORGE'S GUEST HOUSE Bluff Point

CARAVAN PARKS

CARAVAN PARK West-End
TARCOOLA PARK South Geraldton
GREENOUGH RIVER PARK Greenough River

For all travel and accommodation information contact the
Geraldton Tourist Bureau

YOUNG MOTORS

PTY. LIMITED

The Holden Specialists of Geraldton
Authorised General Motors-Holden Dealers
for

HOLDEN VEHICLES

Vauxhall
Cars



Bedford
Trucks

**YOUNG MOTORS PTY. LTD.
GERALDTON**

Telephones 312, 325 and 1041

Holden
PARTS AND SERVICE

O.K. Guaranteed Used Vehicles
Chamberlain Tractors and Implements

YOUNG MOTORS
PTY. LTD.
TELEPHONES 312 AND 325

W.A.'S WINTER PLAYGROUND



As soon as the first cold blast of winter is felt in southern places, the "Geraldton Pilgrimage" commences.

Each winter season, Geraldton attracts more and more holiday-makers from the colder districts and this town has certainly become W.A.'s winter playground.

Geraldton is truly a place of all-year-round SUNSHINE, and offers young and old alike a varied menu of holiday activity.

Transport services to Geraldton from the city are as follows:—

Mac.Robertson-Miller Airlines provide a daily service to and from Perth, a journey of only 87 minutes.

Midland Railway Road Service offers a daily service to and from Perth, plus several night bus services weekly.

A train service is offered by both the W.A.G.R. and the Midland Railway Company.

Geraldton is 312 miles from Perth on an "all-black" road, taking you through very rich pastoral country.

PLACES OF INTEREST

GERALDTON offers you something unique in winter vacations:—SUNSHINE, FISHING, SHOOTING, WILDFLOWERS, OLD WORLD HISTORY, BEAUTY SPOTS, SPORTS.

- ◆ **WIGST-END BEACH**—Here you can drive your car on to the water's edge for your picnic or your day's fishing.
- ◆ **FLAT ROCKS** (at South Greenough) is noted for the luscious cray.
- ◆ **DEVLIN'S POOL**, or the mouth of Greenough River, Oakabella Beach, and Drummond's Cove are all excellent picnic resorts.
- ◆ **Mouthgates**, Port Gregory, Sandalwood Bay and Lucky Bay are all ideal for fishing.
- ◆ **The Town Beaches**, the Back Beach and the Point Moore Lighthouse are all popular localities for bathing and picnic parties.

(CONTINUED OVERLEAF)

GERALDTON'S
RADIO THEATRE
 PHONE 506
 DIRECTION GOLDFIELDS PICTURES LIMITED

PRESENTS SPECIAL SUNSHINE FESTIVAL PROGRAMME

**Coming Friday, Saturday and Monday, August 25th
 to 28th**

MIDNIGHT LACE (A)

Starring Doris Day, Rex Harrison and John Gavin

— Plus —

A WOMAN LIKE SATAN (A)

Starring Brigitte Bardot

.....
**Saturday Afternoon Matinee Commencing at
 2 o'clock**

THE BRASS LEGEND (G)

Starring Hugh O'Brian

— Plus —

Bundles of Cartoons Specially for the Kids

**Mid-Week Screenings—Tuesday, Wednesday and
 Thursday**

FIVE GATES TO HELL (A)

Starring Neville Brand, Benson Fong, John Morley and Patricia Owens

QUESTION OF ADULTERY (A)

Starring Julie London and Anthony Steel

.....
**PLEASE NOTE—Five Gates To Hell, plus Cartoons and Shorts
 will be screened as a Matinee on Wednesday Afternoon com-
 mencing at 2 o'clock**

**Friday, Saturday and Monday, September
 1st, 2nd and 4th**

THE STORY OF RUTH (G)

Starring Elana Eden, Stuart Whitman, Tom Tyron

— plus —

BLOOD AND STEEL (A)

PLACES OF INTEREST

(CONTINUED)

SCENIC TOURS—

Geraldton offers you many tours through beautiful scenic country. The following are details of suggested motor trips which can be made by the holidaymaker—

- ◆ TO POINT MOORE LIGHTHOUSE and over Willcock Drive, which runs along the Back Beach.
- ◆ TO WAGGRAKINE CUTTING for a view of the glorious hill tops, the vast expanse of the Indian Ocean and the fertile reaches of the Chapman Valley. About two hours.
- ◆ ALONG EASTERN ROAD to MOONYOONOOKA and then cross-country to Narra Tarra Bridge, returning through the hills. About two hours.
- ◆ TO THE MOUTH OF THE GREENOUGH RIVER, a picturesque and popular picnic and surfing resort. About one-and-a-half hours.
- ◆ TO WICHERINA RESERVOIR, from which the town water supply is drawn, returning through the farming areas of East Chapman. About four hours.
- ◆ TO WALKAWAY through the famous Greenough Flats, the most fertile country in Western Australia. About 2½ hours.
- ◆ GERALDTON CIRCUIT, around the town embracing Bluff Point, the Back Beach and the West-End Beach. About one hour.
- ◆ TO WHITE PEAK QUARRIES, which supplied all the stone for Geraldton's up-to-date harbour, this trip embracing some of the district's best tomato gardens. About two hours.
- ◆ NARNGULU, Deepdale-Aerodrome Circuit, passing the racecourse. About one-and-a-half hours.
- ◆ TO NORTHAMPTON through Nanson and Nabawa and returning along the Coast Road. About five hours.

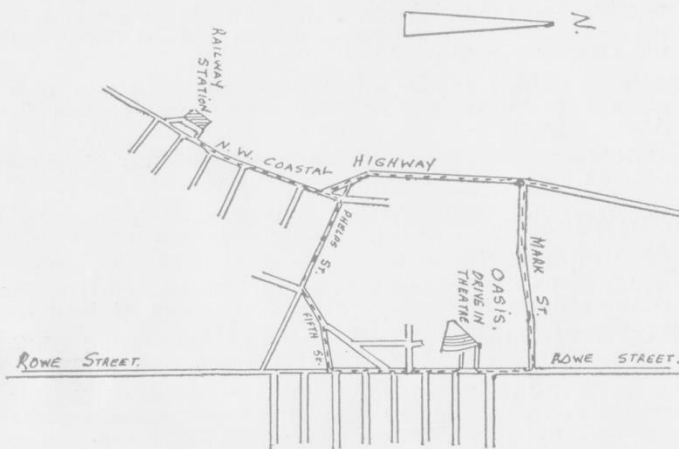
Any of the foregoing trips may be arranged by communicating with the taxi rank, or with the office of Geraldton Tourist Bureau or through the proprietors of local bus services.

OTHER PLACES OF SPECIAL INTEREST—

St. Francis Xavier's Cathedral; picturesque St. George's Church at Bluff Point; Birdwood House, headquarters of the Geraldton Sub-Branch of the R.S.L.; panoramic view of Geraldton from Waverley Heights; tomato gardens and superphosphate works at Bluff Point; Geraldton High School in Carson Terrace; Stella Maris College in Sanford Street and St. Patrick's College in George Road; Nazareth House at Bluff Point; Mortuary Chapel at Utakarra Cemetery; St. John of God Hospital in Fraser Street; Methodist Church (built in 1863); Victoria District Hospital (1857)—the latter two buildings being probably the oldest public buildings in Geraldton.

Visitors should see the huge new grain silos and bulk handling facilities at the wharf, fishermen's jetty, superphosphate works at Wonthealla and many other industrial buildings.

OASIS DRIVE-IN WONTHELLA



AUGUST 22nd/24th—

APRIL LOVE — Pat Boone, Shirley Jones (G)
COPPER SKY — Jeff Morrow, Colleen Gray (A)
 Cartoon and News Review.

AUGUST 25th/26th/28th—

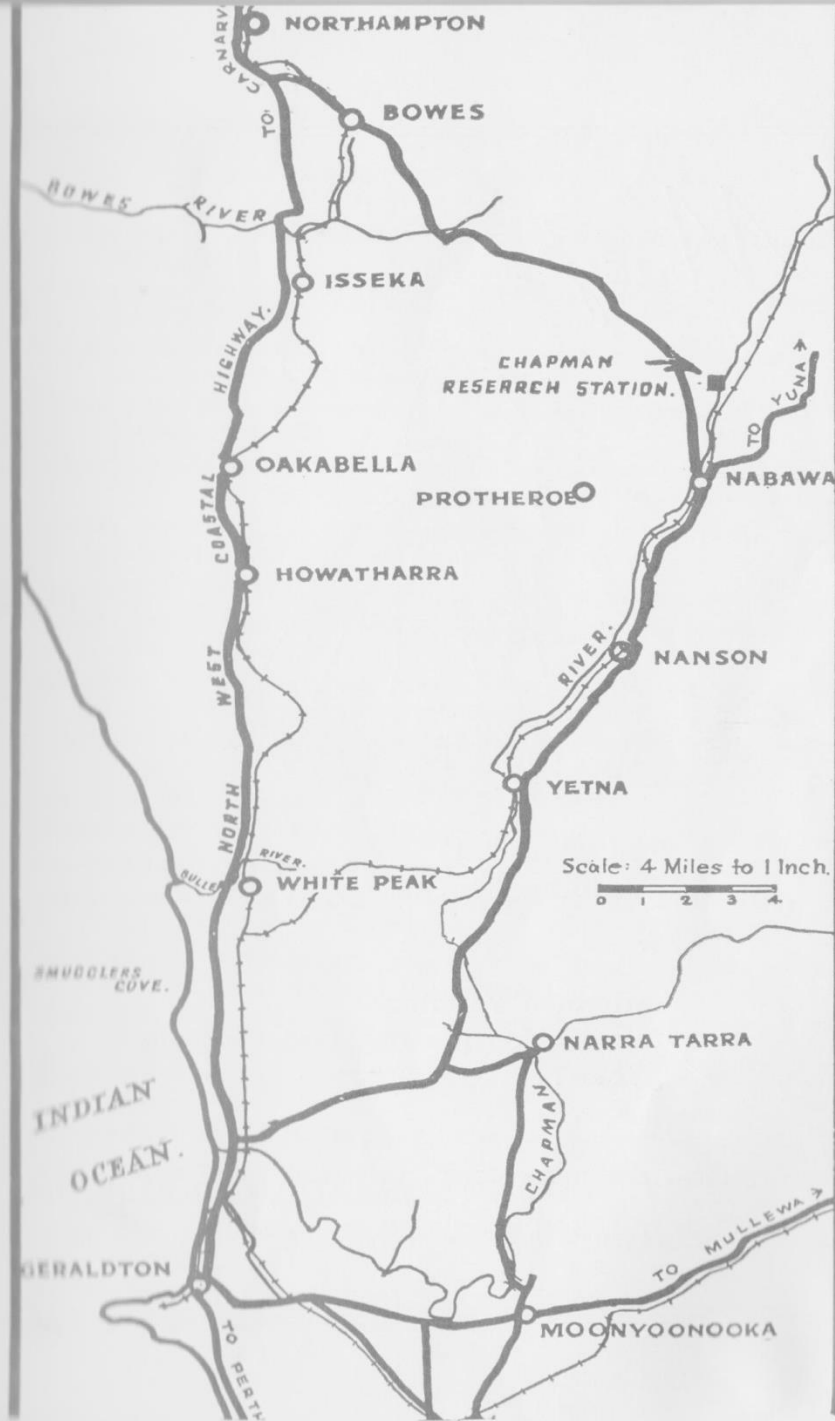
A PRIVATE'S AFFAIR — Sal Mineo, Christine Carere (G)
THUNDERING JETS — Rex Reason, Audrey Dalton (G)
 Cartoon and News Review.

AUGUST 29th/30th/31st—

TEACHER'S PET — Clark Gable, Doris Day (G)
COUNTRY MUSIC HOLIDAY — Zsa Zsa Gabor (G)
 Cartoon and News Review.

SEPTEMBER 1st/2nd/4th—

DRAGON WELLS MASSACRE — Barry Sullivan, Mona Freeman (G)
MAGNIFICENT ROUGHNECKS — Jack Carson, Mickey Rooney (G)
 Cartoon and News Review.



Macy's



for Beautiful
Wedding Frocks

★

Advance Fashions
for Distinctive Day and Evening
Wear !

★

71 MARINE TERRACE, GERALDTON
Tel. 455

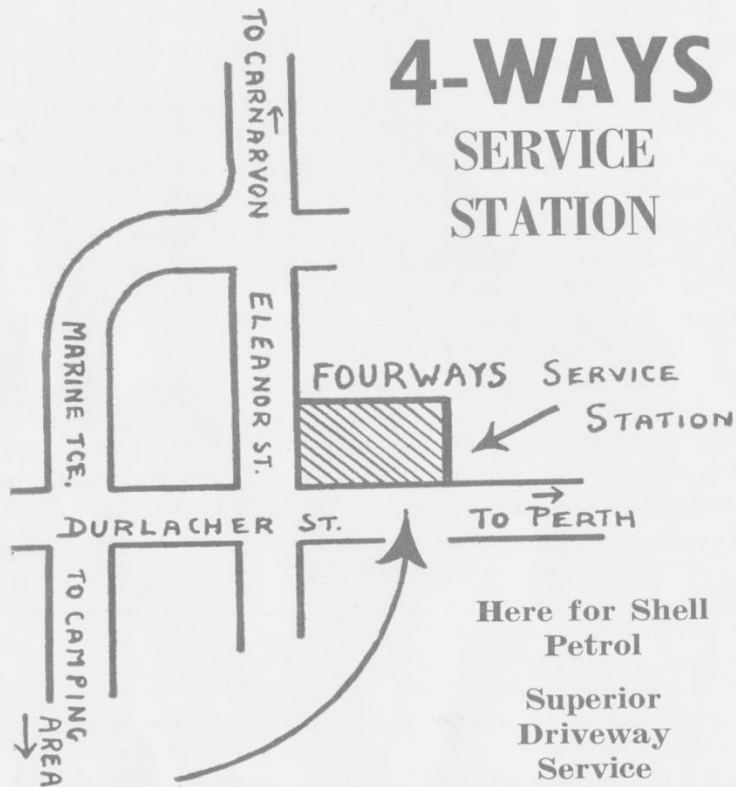
HOW TO GET THERE

- TOWN HALL**—Situated in Eleanor Street on the corner of Durlacher Street.
- GERALDTON TOURIST BUREAU**—Central Marine Terrace, opposite Bank of N.S.W.
- RECREATION GROUND**—Along Marine Terrace to Wharf Gates, turn south along Francis Street to Augustus Street.
- WEST-END BEACH**—Western end of Marine Terrace, at end of Geraldton Wharf.
- YACHT CLUB HALL**—Marine Terrace on foreshore, opposite Radio Theatre and Methodist Church, corner of Fitzgerald Street.
- C.W.A. HALL**—Marine Terrace, opposite Great Northern Hotel, between Durlacher Street and Forrest Street.
- BIRDWOOD HOUSE**—Eleanor Street, corner of Forrest Street.
- GERALDTON CULTURAL TRUST**—Marine Terrace on foreshore west of Yacht Club Hall.
- QUEEN'S PARK**—Cathedral Avenue, opposite St. Francis Xavier's Cathedral (corner of Sanford Street).
- GERALDTON GUN CLUB'S GROUNDS**—At Utakarra via Flores Road, Wonthella.
- ST. JOHN AMBULANCE HALL**—Lester Avenue.
- GERALDTON GOLF CLUB LINKS**—At Utakarra via Eastern Road.
- FISHERMEN'S WHARF**—West-End, via Marine Terrace.
- GERALDTON POLICE AND CITIZENS' YOUTH CLUB**—Corner of Marine Terrace and Gregory Street.
- WONTHELLA MEMORIAL HALL**—Fifth Street, Wonthella, via Eleanor Street east and Phelps Street.
- GO-KART STADIUM**—Near Point Moore Lighthouse; proceed via Marine Terrace West, turn left at sign.
- VICTORIA DISTRICT HOSPITAL**—Corner of Eleanor Street East and Bayley Street.
- RAILWAY INSTITUTE HALL**—East end of Marine Terrace.
- A.L.F. CROTHERS MEMORIAL WISHING WELL**—On Waverley Heights overlooking the town.
- BULK HANDLING GRAIN SILOS AND LOADING FACILITIES**—At the Wharf.
- POLO GROUND**—Eastern Road, next to Racecourse.
- BOY SCOUTS' HALL**—Sanford Street.

Welcome

from

4-WAYS SERVICE STATION



**FREE ! Geraldton Maps with
every purchase**

The Festival Queen Competition

One of the highlights of the Festival will be the Crowning of the Sunshine Festival Queen at the opening ceremony on Saturday, August 26th, 1961.

The Queen Competition is being organised by the Rotary Club of Geraldton on behalf of the Festival Committee. It is open to all unmarried girls of not less than 17 years at the date of judging and who live within the Town of Geraldton or the Shire Councils of Geraldton-Greenough, Chapman Valley, Irwin, Mullewa or Northampton.

The preliminary judging will take place before Saturday, August 26th. All the competitors will appear before the judges at the opening ceremony and the winner's name will be announced following the official opening ceremony.

The judging will be based on appearance, speech, deportment and general knowledge. Thus, it will in no sense be a beauty contest. During the judging, the contestants will be required to wear only two types of clothing, these being evening and day wear.

Through the courtesy of Mac.Robertson-Miller Airlines Limited the winner will receive a free return air trip to Albany with free accommodation at the London Hotel for two weeks, and will also be the recipient of a presentation sash as a memento of the occasion. The runner-up will be awarded a trophy valued at £10 and also a presentation sash.

**THE
UNITED
INSURANCE
COMPANY LIMITED**

(Incorporated in New South Wales)

Security



Service

HEAD OFFICE: GEORGE AND HUNTER STREETS, SYDNEY
FIRE, MARINE & ACCIDENT

Insurances of Every Description

OVER 80 BRANCHES throughout AUSTRALIA

The United Insurance Co. Ltd. was established in Sydney in 1862. For nearly a century it has played a prominent part in the development and protection of our people's resources.

Today you will find the United Organisation spread throughout the length and breadth of Australia. Its representatives are there to give you expert and friendly advice on all your insurance problems. When insured with the United, you know your insurances are with one of the oldest, strongest and most progressive Insurance Companies.

Manager for Western Australia—W. S. Kelly
Geraldton Branch—157 Eleanor Street, Geraldton
Local Manager—Stuart King
Telephone Geraldton 709

SATURDAY, AUGUST 26th, 1961

9.00 a.m.

THE GERALDTON GUN CLUB

Is conducting the Single Barrel State Intermediate Championship at Gun Club Grounds at Utakarra

10 a.m.

EXHIBITIONS

See Pages 77, 79 and 82.

1.00 p.m.

State Double Rise Championship at Gun Club Grounds at Utakarra

4 p.m.

Festival Parade

Organised by the Geraldton Sub-Branch of the R.S.L. Marshal, Mr. L. McCurry; secretary, Mr. J. F. Buckle

FEATURING:

**The Sunshine Festival Queen Competitors
Western Command Band.**

**E. Coy. 1st Battalion Royal West Australian Regiment
W.A. Show Jumping Association (Geraldton)**

Marching Girls—Caledonian Pipe Band

**Floats—Clowns—Novelty Cycles
and many other attractions**

Depart Anzac Terrace at 2 p.m.—Proceed along Forrest Street, Marine Terrace and via Evans Street to the Recreation Ground. All floats will enter the Recreation Ground for judging

HOLDEN

OWNERS

When Visiting

GERALDTON

Call at

MACS

The Friendly

HOLDEN DEALER

SERVICE

Petrol

PARTS

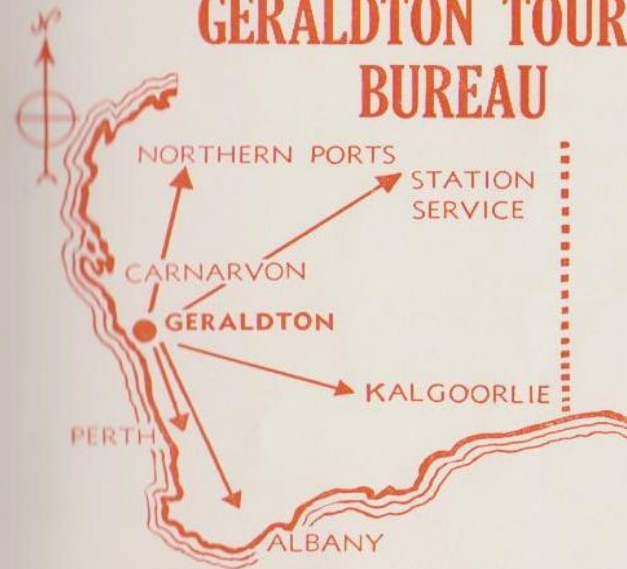
Oil

BOOK FOR ALL POINTS

on **MMA'S** Service

THROUGH

GERALDTON TOURIST BUREAU



MMA



"Serving the West"

MAC ROBERTSON-MILLER AIRLINES LTD.

FOR RESERVATIONS

PHONE 555

INCREDIBLE

See it!
Sit in it!
Drive
it!



★
Up to 70
m.p.h. at
less than
1d. per
mile

★
"The
Littlest
Big Car
in the
world"

MORRIS '850'

SEE IT AND OUR FULL RANGE OF
AUSTIN

MORRIS

WOLSELEY

AND M.G. VEHICLES

Nuffield Tractors

BMC Marine Engines

Lambretta Scooters

B M C

SERVICE — PARTS — SALES

Let us share your Festival Car Worries
CALL OR PHONE

Winterbottoms

THE DRIVING FORCE IN GERALDTON'S FUTURE

Tel. 708 (after hours 875)

Mariners Fish Supply

Opposite Railway Station

**Crisp Golden Fish and Chips
To Take Away**

Fresh and Smoked Fish

★

**OPEN TILL 10.30 P.M. DURING
FESTIVAL WEEK**

★

Telephone 621

R. L. LUNT & CO.

Eleanor Street, Geraldton

P.O. Box 257. Tel. 501

AGENTS FOR

- NEPTUNE OIL CO
- DEALER FOR NEW HOLLAND
HAY MAKING MACHINERY
- DEPOT AND DISTRIBUTORS
FOR C.I.G.

SATURDAY, AUGUST 26th, 1961

8.45 p.m.

At the Recreation Ground A PROGRAMME OF EVENTS AND ENTERTAINMENTS

Organised by the Geraldton Sub-Branch of the R.S.L.

FINAL OF THE TUG-OF-WAR
START OF THE CROSS COUNTRY RACE
DISPLAY BY WESTERN COMMAND BAND
WEAPON DEMONSTRATION BY E. COY. 1st
BATTALION ROYAL WEST AUSTRALIAN REGIMENT
W.A. SHOW JUMPING ASSOCIATION (GERALDTON)
MARCHING GIRLS
CALEDONIAN PIPE BAND
NOVELTY CYCLE RACE
PARADE OF WINNING FLOATS

and

**The Swan Girls' Amateur Gymnastic Club
(Perth)**

with Peter Jol on the Trampoline
AFTERNOON TEAS—COLD DRINKS
BAR
Admission, 2/-; Children, 1/-; Cars, 2/-

8.30 p.m.

MILITARY FIRE POWER DISPLAY

by E. Company 1 R.W.A.R.
LOCATION—WEST OF FISHERMEN'S WHARF
Demonstrating power of 3-inch Mortars, Vickers Machine
Guns, F.N. Rifles, Owen Machine Carbines and Flares

Have FUN in the SUN

Enjoy the
Sunshine
Festival
with



Peters

**Ice Cream
and
Frozen
Confection**

SATURDAY, AUGUST 26th, 1961

GRAND FESTIVAL OPENING SPECTACULAR CROWNING OF FESTIVAL QUEEN

Thrilling Music by Western Command Band and
Dance Band

AT TOWN HALL

Organised by Apex Club
Admission—5/- each; Balcony, 3/- each
Tickets at Town Hall on entry
Entertainment in following order:—

8.30 p.m.

DANCE MUSIC, ETC.

by Band of Headquarters Western Command, Australian
Regular Army, which appears by courtesy of Brigadier
G. P. Hunt, O.B.E., Commander Western Command, and
is conducted by the Bandmaster, Warrant-Officer C. P.
James, M.B.E.

OFFICIAL OPENING

9.45 p.m.

The Premier of Western Australia (Hon. D. Brand, M.L.A.)
will officially open the Festival

10 p.m.

DANCING

Even if you don't want to, your feet will—to music
provided by various members from the Western
Command Band

10.15 p.m.

CROWNING OF THE FESTIVAL QUEEN

Contest organised by Geraldton Rotary Club

10.45 p.m.

MORE DANCING (to 1.30 a.m.)

8.30 p.m.

Another Attraction—Usual Saturday Night
Dance at the Yacht Club



TROPICAL TRADERS, Tel. Ger. 566

Sunshiners

IN THE SHADOW OF POINT MOORE
LIGHTHOUSE

For Brighter Eating

★

ORIENTAL AND CONTINENTAL CUISINE

★

Chef Redante is at your service to prepare
your favourite dish

★

TEL. 223

SUNDAY, AUGUST 27th, 1961

9.30 a.m.

**20-Bird Double Barrel Down-the-Line—£50
Geraldton Handicap**

Gun Club Grounds, Utakarra

10 a.m.

EXHIBITIONS

See Pages 77, 79 and 82.

1 p.m.

FOOTBALL

Great Northern National Football League Semi-Finals
Recreation Ground

1.30 p.m.

**Commonwealth Double Barrel "Sparrows"
Championship**

40 Birds

Gun Club Grounds, Utakarra

3 p.m.

GYMKHANA AT POLO GROUND

Utakarra

W.A. Show Jumping Association, Geraldton Branch

Admission by collection

8 p.m.

Western Command Band Recital

at Victoria District Hospital

8.45 p.m.

VARIETY CONCERT

AT TOWN HALL

Western Command Band

Music by prominent composers from many countries

Conducted by Bandmaster Warrant-Officer C. P. James,
M.B.E.

ADMISSION—5/-

Bookings at Geraldton Tourist Bureau



GERALDTON BUILDING CO.

PTY. LTD.

The Largest and Most Up-to-date
Building Enterprise outside Perth

ENGINEERING — BOAT BUILDERS

TIMBER — HARDWARE

CABINETS — JOINERY

UPHOLSTERY

GLASS

ALL ELECTRICAL INSTALLATIONS

**Prefabricated Roof Trusses and
Sheds a Specialty**

**Cement Roofing Tiles and
Pre-Cast Cement Goods**

INQUIRIES INVITED BY

Geraldton Building Co. Pty. Ltd.

OCEAN STREET, GERALDTON

Tel. 1094 (3 lines) — P.O. Box 121

Opposite—An impressive aerial picture showing the extensive educational and residential buildings and playing fields and facilities of St. Patrick's Christian Brothers College, Geraldton.



IN GERALDTON . . . IT'S

The VICTORIA

Geraldton's Leading Hotel and Beer Garden

◆ First-Class Bars, Lounge and Dining Room Service

H. G. and M. J. McGregor, Proprietors.

TELEPHONE 67



For Any Reason - In Any Season

DRINK

Chapman & Jose

COOL DRINKS



A GERALDTON PRODUCT

SUNDAY, AUGUST 27th, 1961

CHURCH SERVICES

COMBINED SERVICE

Embracing members of Presbyterian, Methodist, Salvation Army and Church of Christ Faiths, will be conducted at Presbyterian Church at 7.30 p.m.

ST. FRANCIS XAVIER'S CATHEDRAL

Masses at 7 a.m., 9 a.m. and 10 a.m.
Evening Devotion, 7.30 p.m.

ANGLICAN CHURCH, GERALDTON

Parish Eucharist, 8 a.m.
Sunday School, 10 a.m.
Evensong and Sermon, 7.30 p.m. (Joint Service with St. George's, Bluff Point, to which the Greek Orthodox Church is invited)

METHODIST AND PRESBYTERIAN CHURCHES

Family Worship and Sunday School, 9.30 a.m. (in Presbyterian Church)

SALVATION ARMY

Meeting at 11 a.m.
Junior Meetings at 10 a.m. and 2.30 p.m.

SEVENTH DAY ADVENTIST

Service at 11 a.m. every **Saturday** at the Church in Shenton Street

CHURCH OF CHRIST

Sunday School, 9.45 a.m.
Lord's Supper, 11 a.m.
Gospel Service, 7.30 p.m.

“PAGES”

AUTO ELECTRICAL SERVICE

All Classes of Auto Electrical Repairs

NEW BATTERIES AT WHOLESALE PRICES

(Guaranteed two years)

6-volt from £4/17/5 — 12-volt from £6/16/-

ANZAC TERRACE — REAR OF FIRE STATION

Phone 693

South British Insurance

COMPANY LIMITED

Transacts all classes of

FIRE, MARINE, ACCIDENT INSURANCE

Our district inspector (Mr. H. G. Ryan) will be pleased
to attend to any inquiries

TEL. GERALDTON 622

Perth Office: 23 Barrack Street—P. C. Munro, Manager

MONDAY, AUGUST 28th, 1961

6 a.m. to 9 p.m.

FISHING COMPETITION

OPEN TO ALL

Fishing Area—From Back Beach to Lighthouse, thence to Durlacher Street

Fishing from shore or jetties only—NOT FROM BOATS
The winner will be the person catching by line the fish that weighs the heaviest

PRIZES — PRIZES

All fish must be weighed in at Mariner's Fish Supply in Eleanor Street or Seafoods Supply in Marine Terrace by 9 p.m.

Persons wishing to record their catch must produce a witness and both must sign the official sheet

10 a.m.

EXHIBITIONS

See Pages 77, 79 and 82.

10 a.m.

TOUR AROUND TOWN AND BEACHES

Departs from Tourist Bureau—Bookings at Tourist Bureau

8 p.m.

Children's Fancy Dress Ball

at Geraldton Town Hall

PRIZES — PRIZES

Admission—1/- per child; Balcony, 2/-

8.30 p.m.

PHANTOM TIME DANCE

Spookiest Night of the Year at Geraldton Yacht Club



FRESH FISH
SMOKED FISH
CRAYFISH

(Any Quantity)

FISH AND CHIPS
SMALLGOODS

Country Order Carefully
Attended To

SEAFOODS SUPPLY

Marine Terrace, Geraldton — Tel. 48; P.O. Box 280

Triple "G" Butchers

are

**PLEASED TO MEET YOU WITH MEAT
TO PLEASE YOU**

**Only Choice Cuts of Choice Meat
are Stocked**

Barbecue Catering a Specialty

PHONE 740

BURGES STREET

MONDAY, AUGUST 28th, 1961

8 p.m.

GO-KART RACING

Under lights at Stadium, near Lighthouse; the only track in Australia under lights

8 p.m.

EUCHRE EVENING

PRIZES

At Boy Scouts' Hall, Sanford Street

Organised by North-West Women's Auxiliary of Boy Scouts

Admission, 3/6 (including supper)

12,000 Visitors . . .

The idea of conducting an annual Festival in Geraldton was first conceived by the Geraldton Retail Traders' Association more than three years ago. However, a committee of citizens was formed and the very successful 1959 and 1960 Sunshine Festivals were the result. It is estimated that 12,000 visitors from many parts of Western Australia and Eastern States have visited Geraldton on these festive occasions

WHEN IN GERALDTON SHOP AT—

Costantino & Son

YOUR SAVE-WAY STORE

For Best Brands of Groceries

Our Specialty—CONTINENTAL
SMALLGOODS (We Import
Only the Best)



CHOICEST QUALITY FRUIT AND VEGETABLES

Fresh Daily



TEL. 422 ——— FRIENDLY SERVICE ——— TEL. 422

CALL AT

GUSCOTT'S

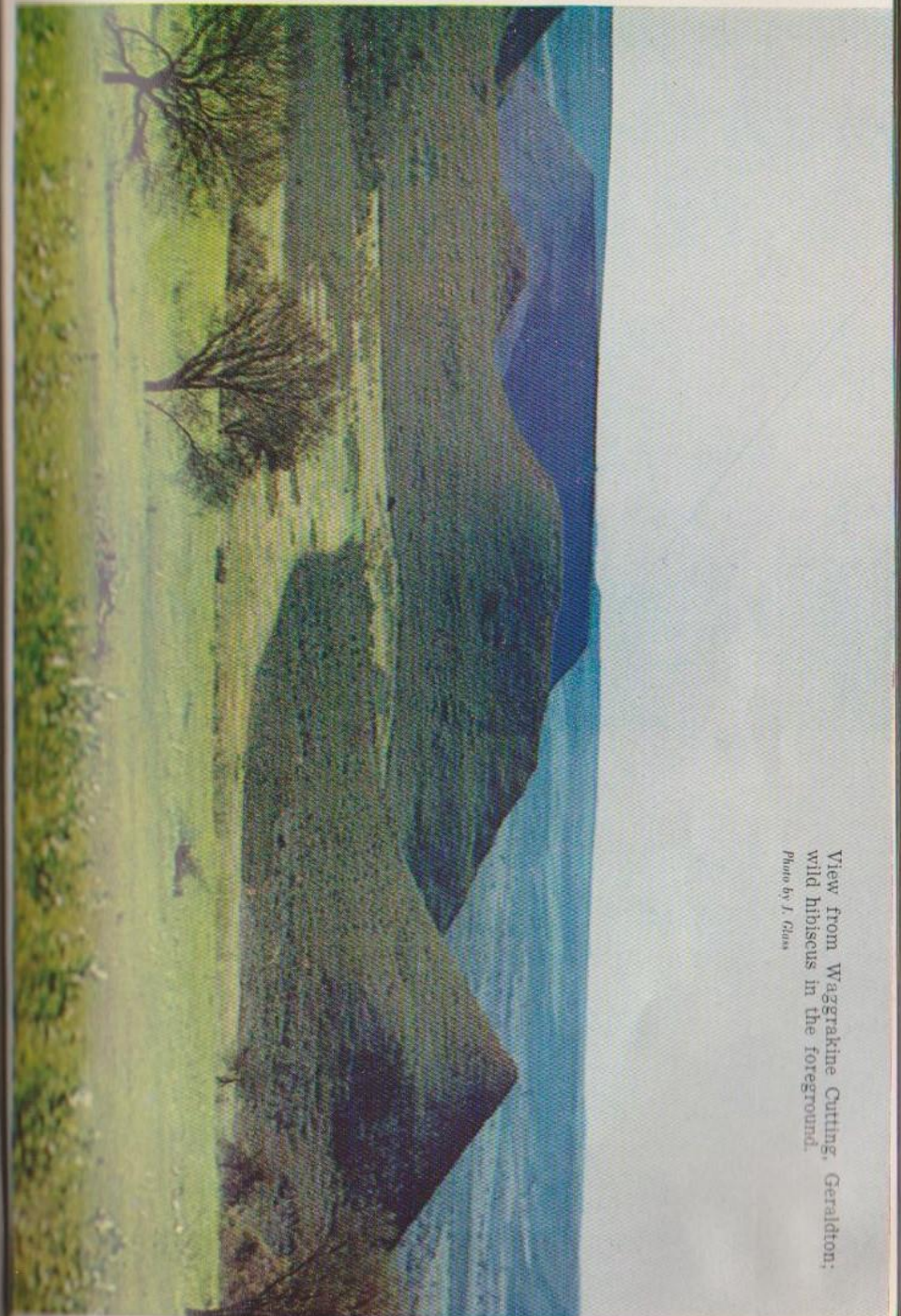
FOR ALL SPORTING GOODS



SADDLERY, SHOES, TOYS,
HARDWARE AND ALL
KITCHENWARE



LAY-BY NOW FOR CHRISTMAS



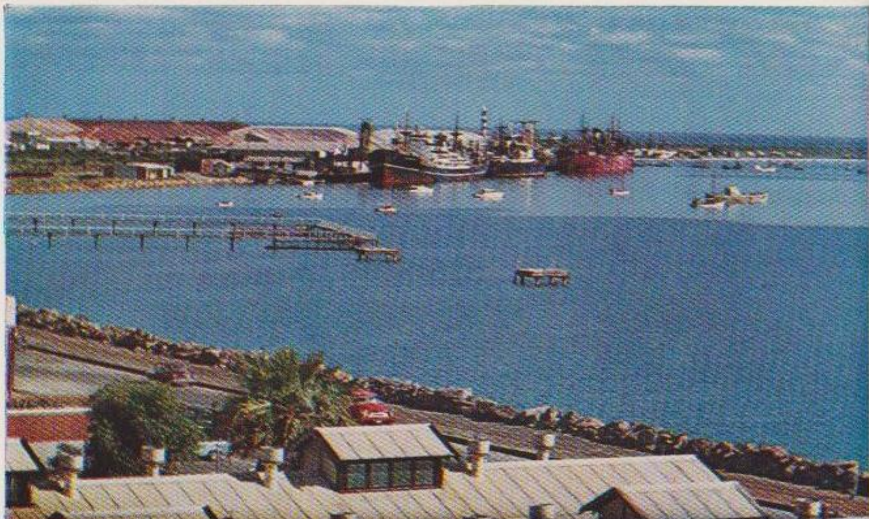
View from Wagerrakine Cutting, Geraldton;
wild hibiscus in the foreground.
Photo by J. Glass

RELY

RON

ON

SHAW



Geraldton's modern port facilities handle ships from all over the world.

Photo by J. Glass



Durlacher Street, looking south from Marine Terrace.

Photo by J. Glass

For Friendly Service at all times

F. T. (JIM) HUNT

Ph.C., M.P.S.

CHAPMAN'S PHARMACY

Tel. 155; after hours, 765—P.O. Box 67

PRESCRIPTION SPECIALISTS

PHOTOGRAPHIC SUPPLIES

★

Agent for Helena Rubenstein Cosmetics

★

77 MARINE TERRACE, GERALDTON

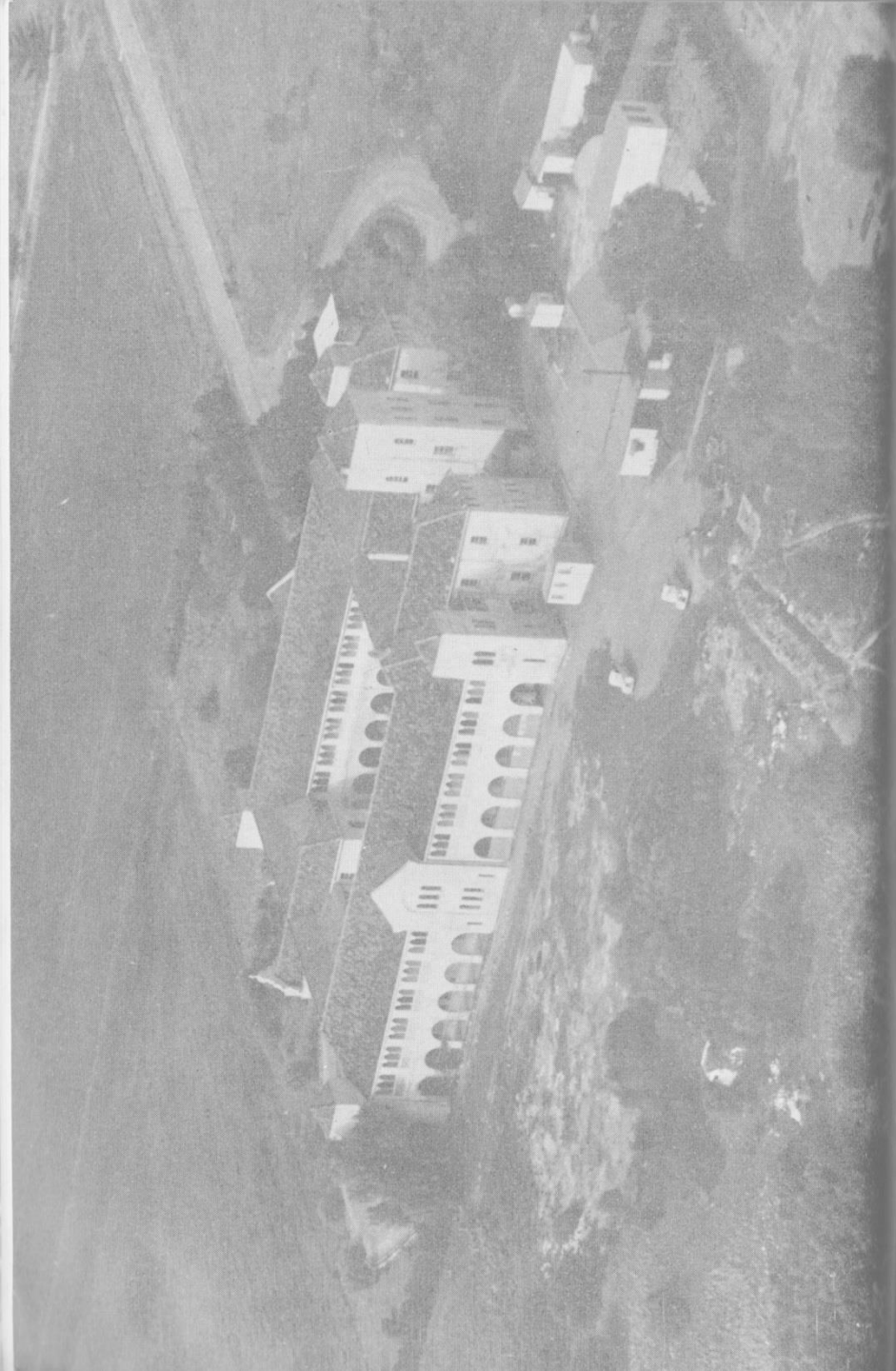
For Hair Styles that turn heads!

DEANNA SALON

CENTRAL MARINE TERRACE

AT YOUR SERVICE

**For appointments Tel. Geraldton 59
Central Marine Terrace**



TUESDAY, AUGUST 29th, 1961

11 a.m.

FAMILY CAR TRIAL

Over approximately 130 miles on good roads; definitely no horror stretches.

A glorious scenic tour of the Geraldton countryside—a pleasant day's outing

Open to all—Good Prizes—**SPECIAL TROPHY FOR BEST LADY DRIVER**

Report to 4-Ways Service Station, corner of Durlacher and Eleanor Streets

Please provide your own luncheon—Fires, hot water provided

10 a.m.

EXHIBITIONS

See Pages 77, 79 and 82.

10 a.m.

TOUR---"RAZOR BACK"

With its glorious scenic views of the Geraldton Districts
Bookings at Geraldton Tourist Bureau

8 p.m.

BALLET

The Gibson School of Ballet presents
"A FESTIVAL FANTASY"

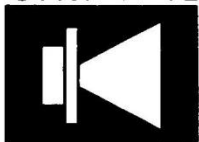
Geraldton Town Hall

Dancing, Singing and 12-Piece Orchestra under direction of Mr. Inder-Smith.



Aerial photography gives an excellent idea of the extent of the buildings and grounds of Nazareth House, Geraldton, home for aged people and orphan children.

S. R. HIRE



Specialists in . . .
**PUBLIC ADDRESS
SOUND, TAPE AND
DISC RECORDING**

See us for that . . .

- ◆ Advertising
- ◆ Field Day
- ◆ Demonstration
- ◆ Dance
- ◆ Meeting
- ◆ Sports Fixture
- ◆ Wedding
- ◆ Party, etc.

Service Telephone 469

Reg. Office: Page's Auto, Anzac Terrace, Geraldton—Tel. 693

It's Free!

Valencia Wine Tasting

At The

**RAILWAY INSTITUTE HALL,
GERALDTON**

DATES

Wednesday—August 30th. Thursday—August 31st.
Friday—September 1st.

DAILY SESSIONS

11 a.m. to 12.30 p.m.; 1 p.m. to 2.30 p.m.; 3 p.m. to
4.30 p.m.

FRIDAY ONLY 8 p.m. to 9.30 p.m.

**OBTAIN YOUR INVITATION AT
TOURIST BUREAU OR HOTELS**

IT'S FREE!

WEDNESDAY, AUGUST 30th, 1961

6 a.m. to 6 p.m.

VISIT TO ABROLHOS ISLANDS

(subject to weather)

LIMITED NUMBER OF PASSENGERS—MEN ONLY

Numbers Limited—Be Early!

Fishing lines and meals to be supplied by passengers.

Contact Mr. Peter Watt at Geraldton Tourist Bureau for details and arrangements

10 a.m.

EXHIBITIONS

See Pages 77, 79 and 82.

10 a.m.

TOUR WICHERINA DAM- ELLENDALE

A most interesting and instructive run to various beauty spots

Subject to sufficient passengers—Bookings at Tourist Bureau

2 p.m.

SPECIAL PICTURE MATINEE

RADIO THEATRE

8 p.m.

Night Gun Club Shoot

(COMPETITION OPTIONAL)

At Queen's Park at corner of Cathedral Avenue and Sanford Street

8 p.m.

NIGHT IN MARINE TERRACE

"High" Ball (10 feet in diameter)—Competitions
Lightburn Wheelbarrow Races—Various Stalls and forms
of Entertainment

KEENE'S

80 MARINE TERRACE, GERALDTON

Gent's Hairdressing Salon

FISHING AND SPORTING GOODS
AGENT FOR LOTTERIES

PHONE GERALDTON 247

SMITH'S MEAT STORE

(Tonky Smith)

MARINE TERRACE, GERALDTON



"Have All the Choice Cuts"

Orders Called For and Delivered

JUST PHONE GERALDTON 901

Stuarts Men's Shop

for

Marshall and Raoul Merton Shoes

WEDNESDAY, AUGUST 30th, 1961

2 p.m. and 8 p.m.

The Social Highlight of the Festival

THE SUNSHINE FESTIVAL MANNEQUIN PARADE

Presenting all that's new in Spring and
Summer Fashions

by

BENNETTS ELITE SUPPLY CO.

FOYS

WRIGHT'S FASHION SALON

GERALDTON TOWN HALL

Wednesday, August 30th

GUEST MANNEQUIN—KAY VIVIAN

Assisted by attractive local mannequins

Afternoon and Evening Parades

AFTERNOON PARADE—

Commences 2.30 p.m. Seating at tables for four.

Afternoon tea served at tables

Admission—7/6 (inclusive of afternoon tea); Dress Circle
(no reservations), 3/-. Afternoon teas available to Dress
Circle patrons at 1/6

EVENING PARADE—

Commences at 8 p.m.

Downstairs—Reserved Seats, 6/-

Dress Circle (no reservations)—3/-

Cool Drinks available at Interval

BOX PLANS for both Parades open at BENNETTS ELITE
SUPPLY CO. on Friday, August 18th, 1961

8.30 p.m.

"Beatnic Night"

YACHT CLUB DANCE

WRIGHT'S FASHION SALON

84-86 MARINE TERRACE
GERALDTON

During this Festival Season see
Wright's for your Distinctive
Dressing

NEIL'S NEWSAGENCY

FOR YOUR BOOKS
STATIONERY REQUISITES
PERIODICALS
SOUVENIRS

Cards for All Occasions

CALL AND INSPECT OUR COMPREHENSIVE RANGE

FOR DIGNIFIED AND COURTEOUS SERVICE

GERALDTON FUNERAL SERVICE

FUNERAL DIRECTORS

(G. K. ALLEN AND W. J. LILLEY)

ADDRESS — 21 ELEANOR STREET, GERALDTON
Telephone 762—Day or Night

THURSDAY, AUGUST 31st, 1961

8 a.m. to 9 p.m.

DEEP SEA FISHING COMPETITION

(Organised by Geraldton Professional Fishermen's Association—Subject to availability of boats)

Open to men only—numbers limited—Be early!

Meals and lines to be supplied by competitors

Fishing Area—The Sea (six miles north and six miles south of Geraldton)

FISHING FROM BOATS ONLY

Competition is for person catching by line the fish that weighs the heaviest

PRIZES — PRIZES — PRIZES

All fish to be weighed in at Mariner's Fish Supply (Eleanor Street) or Seafoods Supply (Marine Terrace) by 9 p.m.

Each competitor who wishes to record his catch must produce a witness and both must sign the official sheet Bookings at Geraldton Tourist Bureau

10 a.m.

EXHIBITIONS

See Pages 77, 79 and 82.

10 a.m.

Tour to Northampton, Glenorie and Port Gregory

(Subject to sufficient passengers)

See a wide variety of different scenery on roads seldom travelled by the visitors; also convict settlement ruins at Port Gregory

Bookings at Geraldton Tourist Bureau

BENNETTS



R. K. EATON & CO.

HOUSE, LAND & ESTATE AGENTS

LARGE SELECTION OF HOUSES AND BUILDING BLOCKS AVAILABLE

We Specialise in Farming Properties, Large and Small in the Geraldton and Surrounding Districts

For Particulars and Inspection Contact Us At
161 MARINE TERRACE, GERALDTON

Phone 775 (after hours 775)

THURSDAY, AUGUST 31st, 1961

2 p.m.

Children's Pet Competition and Parade

Organised by Mr. and Mrs. J. Spendlove

FANCY DRESS DOG PARADE

Prizes — Prizes — Prizes

On the lawns at the rear of Parish Hall (entrance in Eleanor Street)—Lawns by permission of Mr. J. Margetic. Each dog must be on a lead. It is advisable to have dogs inoculated for distemper at least one month before competition.

Judges—Mrs. A. E. Crothers and Mr. A. Williams

3.30 p.m.

KITTEN PARADE

Prizes — Prizes

Judge—Mrs. A. Williams

Town Hall

BIRD PARADE

Town Hall

Prizes — Prizes

Judge—Mr. L. Pomeroy

All birds must be in cages

8 p.m.

GO-KART RACING

At Stadium near Lighthouse

8 p.m.

BRIDGE EVENING

PRIZES

At Boy Scouts' Hall, Sanford Street

Organised by North-West Women's Auxiliary of Boy Scouts

Admission—5/- (including supper)

Carters

FOR YOUR
DRAPERY NEEDS



Carter's Sell It for Less!

EZYS - - EZYS

FOOTWEAR
FITTING
For all the
family by
Fully Trained Staff

It is a feat to fit a foot
WE FIT ALL FEET

EZYWALKIN

MARINE TERRACE ————— GERALDTON
FAIR WEAR OR A FREE PAIR
is our motto



R.A.O.B. LODGES

During the "Sunshine Festival"

G.C.A. Orient No. 77, Sunday, August 26th (Odd-fellows' Hall, Geraldton)

G.C.A. Orient No. 51, Friday, September 1st (Railway Hotel, Northampton)

G.C.A. Orient No. 47, Sunday, September 3rd (Lodge Temple, Mullewa)

G.L.E. of W.A. No. 29, Sunday, September 3rd (Odd-fellows' Hall, Geraldton)

All Lodges tyle at 8 p.m. and visiting members are sure of a pleasant evening.

For further information phone Geraldton 697.

The Care and Maintenance of Most Lawns in
Geraldton is left in the Capable Hands of

W. WILSON

Lawnmowing Contractor and Gardener

Who hopes that your stay in Geraldton was a pleasant one and that you will return again next year

GRANT'S

DRY CLEANERS

153-155 ELEANOR STREET
(OPPOSITE POST-OFFICE LANE)
GERALDTON, W.A.



Country Work Given Prompt Attention
SATISFACTION ASSURED



Telephone 216. P.O. Box 354

A. MINUTA

LADIES' AND GENT'S HAIRDRESSING SALON
For Appointments Ring Telephone 831

Tobacconist and Charities
Consultation Agency

ADDRESS—35 Marine Terrace, Geraldton

FRANK HOPKINS PTY. LTD.

DURLACHER STREET, GERALDTON

For

Massey Ferguson Agricultural Machinery

A MECHANIC IS ALWAYS AVAILABLE
PARTS ALWAYS IN STOCK

TELEPHONE 206

FRIDAY, SEPTEMBER 1st, 1961

6 a.m. to 6 p.m.

FISHING COMPETITION

CHILDREN UNDER 16 YEARS ONLY

Fishing Area—Inside Geraldton Harbor only from the shore, beach and jetties only

NOT FROM BOATS

Competition is for the child catching by line the fish that weighs the heaviest

PRIZES PRIZES PRIZES

All fish to be weighed in at Mariner's Fish Supply, opposite Railway Station, or Seafoods Supply, Marine Terrace, by 6 p.m. Each competitor who wishes to record his catch must produce a witness and both must sign the official sheet

10 a.m.

"RAZOR BACK" TOUR

(See Programme for Tuesday, August 29th)

10 a.m.

EXHIBITIONS

See Pages 77, 79 and 82.

FAMILY SHOPPING DAY

2 p.m.

TOUR AROUND TOWN AND BEACHES

(See Programme for Monday, August 28th)

For First Class Real Estate Advice
Contact

S. J. HATCH

A.A.S.A., R.E.I.W.A.

Real Estate Agent
FARMS—HOUSES—LAND
BUSINESSES

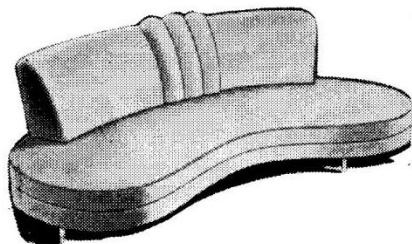
TEN YEARS EXPERIENCE AT YOUR SERVICE

150 MARINE TERRACE
GERALDTON

B. J. & J. B. MADDREN

172 ELEANOR STREET, GERALDTON
Tel. 741

NEW SUITES MADE TO ORDER
MOTOR TRIMMING



★
ALL TYPES
OF
UPHOLSTERY



ALL WORK GUARANTEED

FRIDAY, SEPTEMBER 1st, 1961

2.30 p.m.

GRAND SPRING FLOWER SHOW

Organised by Geraldton District Horticultural Society
Cultured Hot House and Wildflowers
Official Opening by Mayor of Geraldton at 3 p.m.
Admission, 1/-

7.30 p.m.

"INTERNATIONAL NIGHT"

in Marine Terrace

FUN AND GAMES FOR ALL

Stalls—Music Latin and Bohemian

Prizes—Competitions

Conducted by and proceeds to Geraldton and Districts
St. John Ambulance Association

9 p.m.

FESTIVAL CABARET

AT YACHT CLUB

Organised by Geraldton Yacht Club—Top-line Artists

Tickets from Fountain's Pharmacy.

J. BANCHELON

ELECTRICAL CONTRACTOR

8 Malcolm Street, Bluff Point

FOR ALL TYPES OF ELECTRICAL WORK

24-Hour Service

Let Me Beautify Your Home with Modern Lighting

Telephone 257—Bluff Point

DICK FIRMIN'S

TRIANGLE SERVICE STATION

Is Open Day and Night

24-HOUR TAXI SERVICE

Telephone 958 (opposite Government Hospital)

FRANK HOPKINS PTY. LTD.

DURLACHER STREET, GERALDTON

— FOR —

ALL BUILDERS' HARDWARE

TOOLS OF TRADE — PAINTS — MATERIALS

TELEPHONE 206

OLIVER'S

24-HOUR TOWING

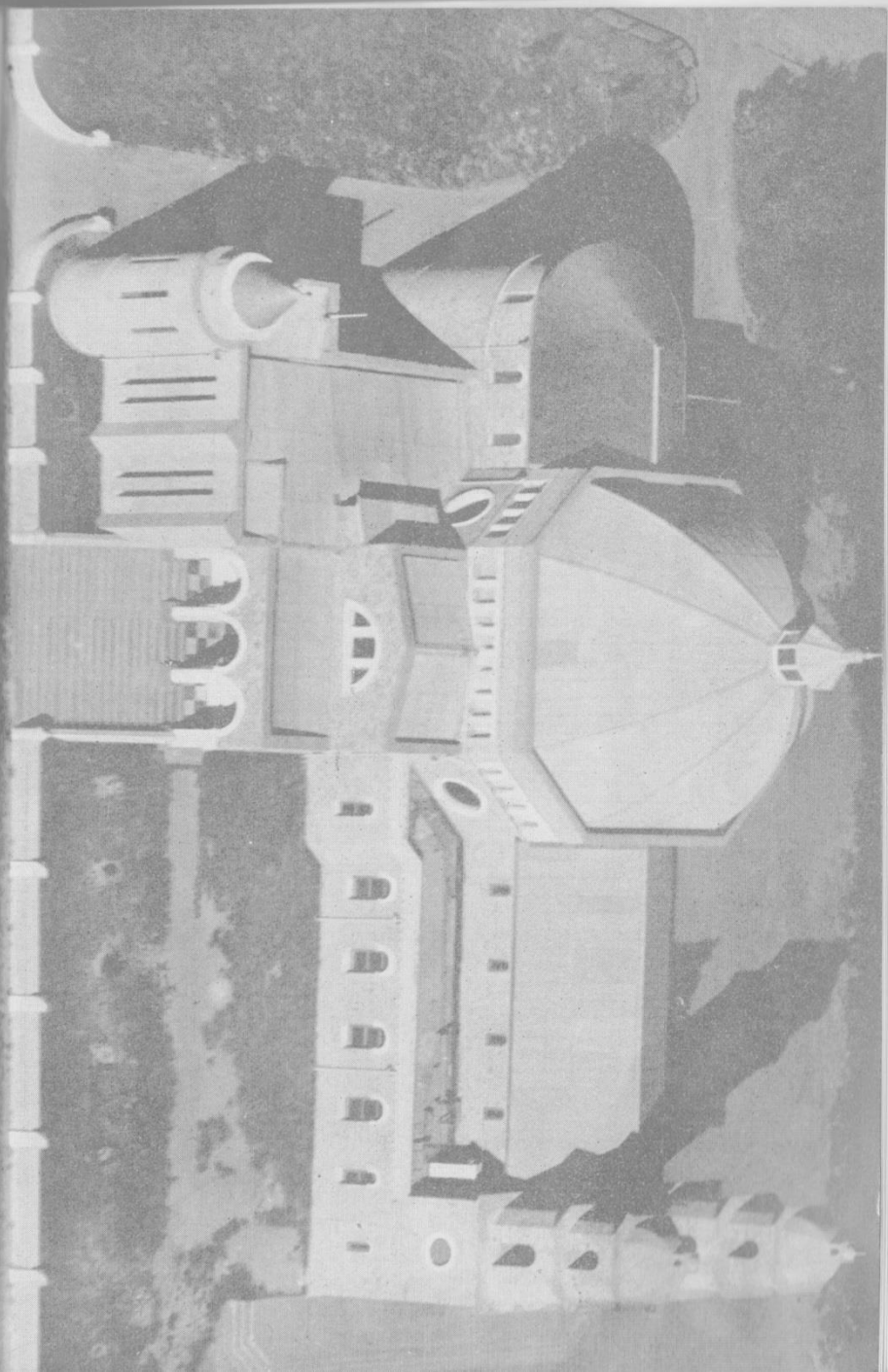


Telephone Geraldton 1170



Address—56 North-West Coastal Highway

On opposite page this aerial picture of St. Francis Xavier's Cathedral gives an unusual view of the massive construction of this unique structure.



A MEAL IN A MOMENT !

— AT —

DAVENPORT'S

FOODARAMA

OPPOSITE FREEMASON'S HOTEL

Hot Barbecued Chickens — Roast Seasoned Pork

Rabbits — Fish Cakes — Smallgoods

Pies — Pasties — Sandwiches — Buttered Buns — Cake

Davenport's Hygienic Cookery is in the hands
of Experts

Telephone 55 ————— Marine Terrace, Geraldton

BRADY & COBLEY

INTERNATIONAL HARVESTER
AND VOLKSWAGEN



Automotive Engineers—Service Station

Telephone 313 ————— GERALDTON ————— P.O. Box 102

SATURDAY, SEPTEMBER 2nd, 1961

10 a.m.

EXHIBITIONS

See Pages 77, 79 and 82.

1 p.m.

Hockey at Recreation Ground

Admission—Adults, 2/6; Children, 1/-; Cars, 1/-

1 p.m.—Two "B" Grade Fixtures

2.15 p.m.—"A" Grade—Yacht Club versus Riffs

(To decide the result of two no-decision matches)

3.30 p.m.—Grudge Match (No Holds Barred)

Geraldton No. 1 versus Geraldton No. 2 (Country
Week Teams)

7 p.m.

Follow the Band to the West-End

The Scottish Pipe Band will play through Marine Terrace
on its way to the West-End

7.30 p.m.

MONSTER BARBECUE

(ROASTING BULLOCK)

Stalls — Music — Prizes

Refreshments

8.30 p.m.

Saturday Night Dance at Yacht Club

WE HAVE MUCH TO OFFER

Geraldton has much to offer holiday-makers in the way of relaxation and general sport and sightseeing. We can boast some of the best beaches in the State, a safe children's beach, surf, water ski-ing, tennis, bowls, croquet, fishing, scenic drives, good accommodation and, in all, all the comforts and entertainments a visitor desires

GERALDTON TEA ROOMS

GRILLS (FISH AND STEAK)

LIGHT LUNCHEONS

MORNING AND AFTERNOON TEAS

SUPPERS

MILK BAR ICE CREAM

FRESH FRUIT DRINKS OUR SPECIALTY

Open 8 a.m. to midnight

ADDRESS—NEXT TO EZYWALKIN

Railway Meat Store

E. R. BERNHARD

FOR QUALITY MEATS

BABY BEEF

AND VEAL

Frozen Foods

Frozen Foods



“COCK OF THE HARBOUR”

“RIOT,” owned and skippered by Mr. A. Ward, Yvonne Type Catamaran Won Liverpool & London & Globe Insurance Co. Shield for third time in succession and which he now retains.

W. McCARTNEY

PANEL BEATER

ANZAC TERRACE, GERALDTON

Telephone 856

QUOTES GLADLY GIVEN

LAKE'S - - JEWELLERS

132 Marine Terrace

WATCHMAKER AND JEWELLER

Souvenirs—Jewellery—Gifts for All Occasions

Whilst visiting Geraldton, call at the

SHAMROCK HOTEL

Fitzgerald Street, Geraldton--Tel. 50

DRAUGHT BEER ALWAYS ON TAP

Our aim is Service and Satisfaction

MODERN BATHROOMS NOW INSTALLED

Freddy's and Milady Hairdressers

LADIES !

For Hair Styling that
Looks Natural Ring
Telephone 456 for
your appointment

FREDDY'S

For
Men's Hairdressing
Four Chairs—No
Waiting

170 MARINE TERRACE, GERALDTON

SUNDAY, SEPTEMBER 3rd, 1961

9 a.m.

Scouts' Kon Tiki Expedition

DOWN GREENOUGH RIVER

From Devlin's Pool to Mouth of River

Organised by Combined Troops from North-West Districts and Visiting Scouts from other centres

Mid-day meal to be cooked on each raft by Scouts during voyage

10 a.m. to approximately 5 p.m.

Geraldton Motor Cycle Club Scramble

AT UTAKARRA SCRAMBLE COURSE—Off Eastern Road

Series of events, of which the main attraction will be a closed event for Geraldton Club members competing for their Perpetual Trophy

11.30 a.m.

SPEEDBOAT RACE

Sponsored by Ron Shaw Bermuda Boat Centre and Lightburn Fibre Glass Boats

1st Prize, £15; 2nd Prize, £10; 3rd Prize, £5

Open to all outboard craft up to 45h.p.

Location—At a point mid-way between swimming baths and harbor entrance—Racing towards Bluff Point (distance approximately three miles)

1 p.m.

FOOTBALL

Great Northern National Football League

FINAL

at Recreation Ground

TSOKOS & SONS

(Opposite Tourist Bureau)

Milk Bar - Tea Rooms - Cafe

SANDWICHES TO TAKE AWAY

DAILY LUNCHEON SPECIAL

GRILLS

Telephone 231

FRANK HOPKINS PTY. LTD.

DURLACHER STREET

— FOR —

WALPAMUR AND BERGER PAINTS

COLOR SCHEMES GIVEN AT SHORT NOTICE
PHONE—206

C. M. CARDACE

GROCER, GREENGROCER
AND SMALLGOODS

Fresh Vegetables

OPPOSITE RAILWAY STATION
GERALDTON

SUNDAY, SEPTEMBER 3rd, 1961

BLESSING OF THE FLEET

Organised by Geraldton Professional Fishermen's
Association in conjunction with the Catholic Church

10 a.m.

SOLEMN HIGH MASS

St. Francis Xavier's Cathedral

2 p.m.

PROCESSION

Leaves the Cathedral and proceeds to the wharf via
Marine Terrace

2.30 p.m.

Blessing of the Fleet Ceremony

Grand Review of the Fleet

Water Sports

Trips around the harbour

4.15 p.m.

Blessing of Fleet Parade returns to Cathedral for
Benediction Service

FRIDAY, SEPTEMBER 1st, 1961

2 p.m.

A question in the Geraldton Retail Traders' Monster Competition requires for an answer, the distance between the Post-Office clock and the nearest point of the Tourist Bureau doorway.

At 2 p.m. the Geraldton Town Surveyor will, with assistance, make an official measurement of the distance between these two points.

A MEAL IN A MOMENT!

AT

The White Spot Cafe

59 MARINE TERRACE

Opposite Winterbottom
Motors' Showrooms

COME TO THE WHITE SPOT FOR A NICE MEAL

SERVICE EXCELLENT

OUR MOTTO—CLEANLINESS AND CIVILITY



On the air 19 hours daily
during Festival

6.00 a.m. to 1.00 a.m.

Geraldton's Own Station

EXHIBITION SECTION

EXHIBITION EXTRAORDINARY

BY GERALDTON POLICE AND CITIZENS'
YOUTH CLUB

LOCATION:

Police Boys' Club, corner of Marine Terrace
and Gregory Street

POLICE MUSEUM—As displayed at Royal Show

SUNDAY, August 27th, to SUNDAY, September 3rd
10 a.m. to 10 p.m.

Admission—Adults, 2/-; Children, 1/-

HANDICRAFT DISPLAY

Organised by Mr. K. McKenzie

LOCATION—Geraldton Craft Centre—Primary School
Grounds in Sanford Street

Featuring:

LEATHER WORK

BASKET WORK

BOOK CRAFT

PUPPETS (Display Only)

POKER WORK

Admission Free

MONDAY, THURSDAY AND FRIDAY

2 p.m. to 5 p.m.

SATURDAY, AUGUST 26th

A Highlight of the Festival

TREE SOCIETY DISPLAY

The Victoria District Branch of the Tree Society will have
on display an interesting variety of items connected
with trees and their products

Native Flowers shown on Slides

Travel Films

Cultural Trust Institute, Marine Terrace

Open Daily—10 a.m. to 10 p.m.

Geraldton's One Stop Shopping Centre

Great Northern Food Market

FITZGERALD STREET, GERALDTON

●
MEAT, FRUIT, VEGETABLES
GROCERIES, SMALLGOODS

Rail Orders Gladly and Promptly
Despatched

●
FREE PARKING

T. ASKEW & SON

METAL WORKS

For your Supply of Steel, Bar, Angle,
Plate, etc.

Also Machinery Bolts and
Art Metal Work

Oxywelding and Electric Welding

ELEANOR STREET, GERALDTON

Between the Railway Station and Town Hall

TELEPHONE 30

GERALDTON ART PRIZE

SATURDAY, AUGUST 26th

An Art Exhibition organised by the Geraldton Art Society, open to artists throughout the Victoria District. Prizes have been donated by the Council and the Geraldton Art Society

Open Daily—10 a.m. to 10 p.m.

RAILWAY AMBULANCE HALL, FORREST STREET

SUNDAY, AUGUST 27th, 1961

3.30 p.m.

Official Opening of R.S.L. Combined Services Exhibition

Music by Western Command Band

OPEN TO 10 P.M.

Then daily Monday, August 28th, to Saturday,
September 1st

10 a.m. to 10 p.m.

GENERAL EXHIBITION

BIRDWOOD HOUSE

Presented by Geraldton Sub-Branch of the R.S.L.

EXHIBITIONS BY

Royal Australian Navy

Royal West Australian Regiment

Royal Australian Air Force

Photographic Display by R.A.A.F.

Most Outstanding Display ever shown in W.A.

Collection of War Souvenirs

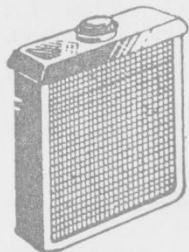
Sea Shells—Minerals

Anchor and Cannon—Recovered from the Abrolhos Islands (presumed from the wreck of the "Zeewyck," wrecked 1768)

and a host of other interesting exhibits

ADMISSION 1/-; CHILDREN, 6d.

RADIATORS!



CARS, TRUCKS AND TRACTORS

New Cores to Suit Every Vehicle

REPAIRS, OVERHAULS AND PRESSURE
FLUSHING

For a Prompt Radiator Recore or Repair
Contact

J. FITZPATRICK & CO.

Tel. 118 — GERALDTON — Tel. 118

After Hours—Telephones 916, 118 or 852

We are agents for A. F. Hoare & Sons, Radiator Manufacturers and
Specialists

GRANTOWN GUEST HOUSE

172 Marine Terrace — Tel. 103 — Geraldton

CENTRALLY SITUATED FOR SHOPPING AND
SWIMMING — AMPLE PARKING

A. J. & K. M. McGREGOR — PROPRIETORS

J. BANCHELON

ELECTRICAL CONTRACTOR

8 Malcolm Street, Bluff Point

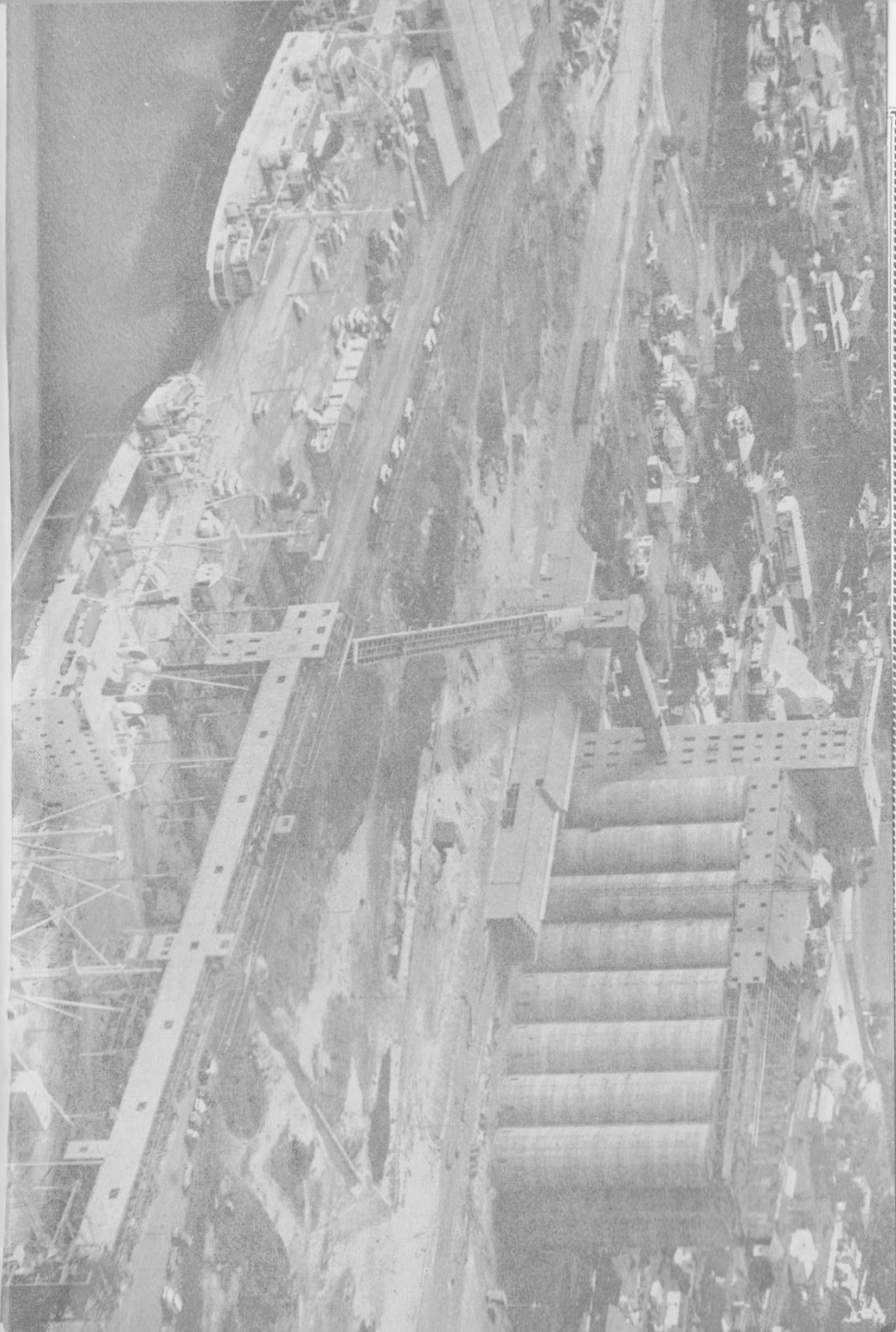
FOR ALL TYPES OF ELECTRICAL WORK

24-Hour Service

Let Me Beautify Your Home with Modern Lighting

Telephone 257—Bluff Point

Seen from the air Geraldton's splendid wharf facilities, huge grain silos and equipment graphically indicate the progress of these northern areas and the township of Geraldton.



VALENCIA WINE TASTING

at the

RAILWAY INSTITUTE HALL, GERALDTON

DATES :

WEDNESDAY, AUGUST 30th

THURSDAY, AUGUST 31st

FRIDAY, SEPTEMBER 1st

Daily Sessions :

11 a.m. to 12.30 p.m.

1 p.m. to 2.30 p.m.

3 p.m. to 4.30 p.m.

FRIDAY ONLY—8 p.m. to 9.30 p.m. (extra session)

OBTAIN YOUR INVITATION AT TOURIST BUREAU
OR HOTELS

Admission Free

Most People Furnish

at

LOOKES

for BETTER furniture Ltd
GERALDTON

Marine Terrace, next P.O. Phone 97

Great Northern Hotel

SPARKLING MUSIC AND ENTERTAINMENT



in our Spacious Beer
Garden and Dance Hall

**GERALDTON'S
LEADING
ORCHESTRAS**

Bar Servery at both ends of
the Beer Garden

All serveries and bars fitted
with modern beer drawing
and chilling plant

Holiday or Business —
You'll enjoy your stay
in Geraldton at the

Great Northern Hotel

Overlooking the mysterious
Indian Ocean

CLEM PENNIMENT, LICENSEE
Phone 79

FRIENDLIEST PLACE IN TOWN