

NINTH
ANNUAL



**GERALDTON
SUNSHINE
FESTIVAL**

*August 25th to
September 3rd, 1967*

Geraldton Sunshine Festival Programme

(1967)

A digitizing project conducted by the
Geraldton Regional Library
2014



City of
Greater Geraldton
Regional Library





welcomes you to
the GERALDTON

Sunshine Festival



Geraldton Newspapers Limited Print

511

NINTH
ANNUAL



GERALDTON SUNSHINE FESTIVAL

August 25th to
September 3rd, 1967



want to be
a maharajah
to serenade
the world's
sweet faces?
. . . then fly

The airline that treats you like a Maharajah

AIR-INDIA

Boeing Services across the world

In association with BOAC and Qantas

A113.73

Ninth Annual Geraldton Sunshine Festival

— ★ —

OFFICIALS

— ★ —

Chairman : W. G. RUDD

Vice-Chairman : I. BOGLE

Executive Committee :

R. W. CAVANAGH (Finance), R. SCHURMANN (Jaycees and
Parade Liaison), G. WRIGHT (Publicity)

Managing Organiser : GERALDTON TOURIST BUREAU

B. J. Philippon—Manager Miss Nola G. Clark—Secretary

Special Events :

Rodeo : R. W. MASLEN Parade : L. McCURRY

Concessions : R. ELLIOTT and S. BOGLE

Official Opening : J. SPENDLOVE

The following pages contain the Official Festival Programme

In some instances minor changes may be necessary and the
programme may vary slightly to that listed

Welcome to Geraldton's Ninth Sunshine Festival



The Sunshine Festival is the pivot around which revolves Geraldton's year, and a time when all the many assets of Geraldton are placed on display in a ten-day Commercial, Agricultural and Historical Exhibition, freely intermixed with sporting and humorous events.

Geraldton's year is one of development in many fields and new records are claimed. Inevitably the year has seen a new tonnage record for the port, for heavy iron ore has been pouring from the wharfside. Recently, announcements have been made of the imminent establishment of shipbuilding and slipways. The weather has been kind to the farmers — land prices in all fields are still on the rise, building activities are at an all time high.

In sport, the wide field has produced teams of Country-State standards — the four Service Clubs have been active in helping the needy both here and abroad. The Community Centre (not to be confused with the Civic Centre) opened during the period, has been a great success as a centre for those of advanced years and the Headquarters of Meals-on-Wheels. This building is open to visitors and the rooms are decorated by the Art Society, the Pottery Club and others and are well worth a visit.

During the year, the Weekend News has featured the Gorges of the Murchison River, the convict settlement of Port Gregory — these and many other places of tourist interest are all close to Geraldton — adding variety to your holiday — and the wildflowers of the sandplain are truly unique, don't miss them.

For those interested, big community projects have been started since last year — the Scenic Drive from the Perth Road right around Point Moore to the Town centre is new and now open — the land development schemes known as Mt. Scott and Mahomet Flats are well under way — the new State Library District Centre has passed the planning stage and tender prices are now being considered — discussions are still proceeding to find ways and means to build an Olympic Swimming Pool — the Federal decision to lay immediately the coaxial cable from Perth to Carnarvon has brought a promise of TV closer for the Town and near district.

We have this month converted to the automatic telephone — the population continues its increase at 2 persons a day, or over 700 per year, with an estimated current population of 14,000.

There is much of interest for all tastes.

Enjoy our Festival — there are many things for your enjoyment — take pride, for this is your State on the move!

Welcome, friend.

C. S. EADON-CLARKE, J.P.,
Mayor,
Town of Geraldton.

Festival Organisation

Geraldton's Sunshine Festival is conducted by a Committee elected at a public meeting normally held in November. During the current year the Finance Chairman, Mr. V. Bannan, resigned due to his departure from Geraldton and was replaced by Mr. R. W. Cavanagh. From the 1966 Festival the Chairman, Mr. W. Rudd, Vice-Chairman, Mr. I. Bogle and Committee man, Mr. R. Schurmann were re-elected to the 1967 Committee and were joined by Mr. G. Wright. With the continuity of committee men and organisers in Mr. B. Philippon and Miss N. Clark a smooth running has been the order of the day. The Geraldton Tourist Bureau was re-appointed Managing Organisers for the 1967 Festival and retained their responsibility for the secretarial and organisational work appertaining to the Festival.



Geraldton Tourist Bureau

Visitors are invited to call into the Bureau should they require assistance. The staff are competent to provide information concerning the town and district and also to advise on travel arrangements within W.A., Australia and overseas.

GERALDTON TOURIST BUREAU (INC.)

Booking Agents for:—

- ★ M.M.A. (Passenger)
- ★ Ansett-A.N.A.
- ★ T.A.A.
- ★ W.A.G.R. (Local and Interstate)
- ★ Lloyd Triestino, Chandris Lines, Flotta Lauro Lines and Holland - America Lines
- ★ Hotel Motel, Guest Houses, Caravans, Beach Cottages

Call into the Bureau office at 137 Marine Terrace
or phone on 21-1400 or 21-1621

How to Get There



ALF CROTHERS MEMORIAL WISHING WELL — On Waverley Heights overlooking the town.

BIRDWOOD HOUSE—Eleanor Street, corner of Forrest Street.

CIVIC CENTRE—Cathedral Avenue.

C.W.A. HALL—Marine Terrace, east end, between Durlacher Street and Forrest Street.

FISHERMEN'S WHARF—West end, via Marine Terrace.

GERALDTON AIRPORT—Six miles east, Mullewa Road.

GERALDTON COMMUNITY CENTRE—Marine Terrace, West.

GERALDTON CULTURAL TRUST—Marine Terrace, West.

GERALDTON GOLF CLUB—At Rangeway, via Eastern Road.

GERALDTON MOTOR CYCLE CLUB — Scramble Track, Waggrakine.

GERALDTON POLICE AND CITIZENS' YOUTH CLUB — Corner of Marine Terrace and Gregory Street.

GERALDTON TOURIST BUREAU—Central Marine Terrace, next to R. & I. Bank.

GO-KART RACEWAY — Near Utakarra Racecourse, via Eastern Road.

LOTUS POOL SQUASH CENTRE—Rangeway.

PONY CLUB GROUND—Eastern Road, next to Racecourse.

QUEEN'S PARK—Cathedral Avenue, behind Civic Centre.

RACECOURSE—Three miles East on Mullewa Road.

RECREATION GROUND—Along Marine Terrace, to Wharf Gates, turn south along Francis Street to Augustus Street.

ST. JOHN AMBULANCE HALL—Lester Avenue.

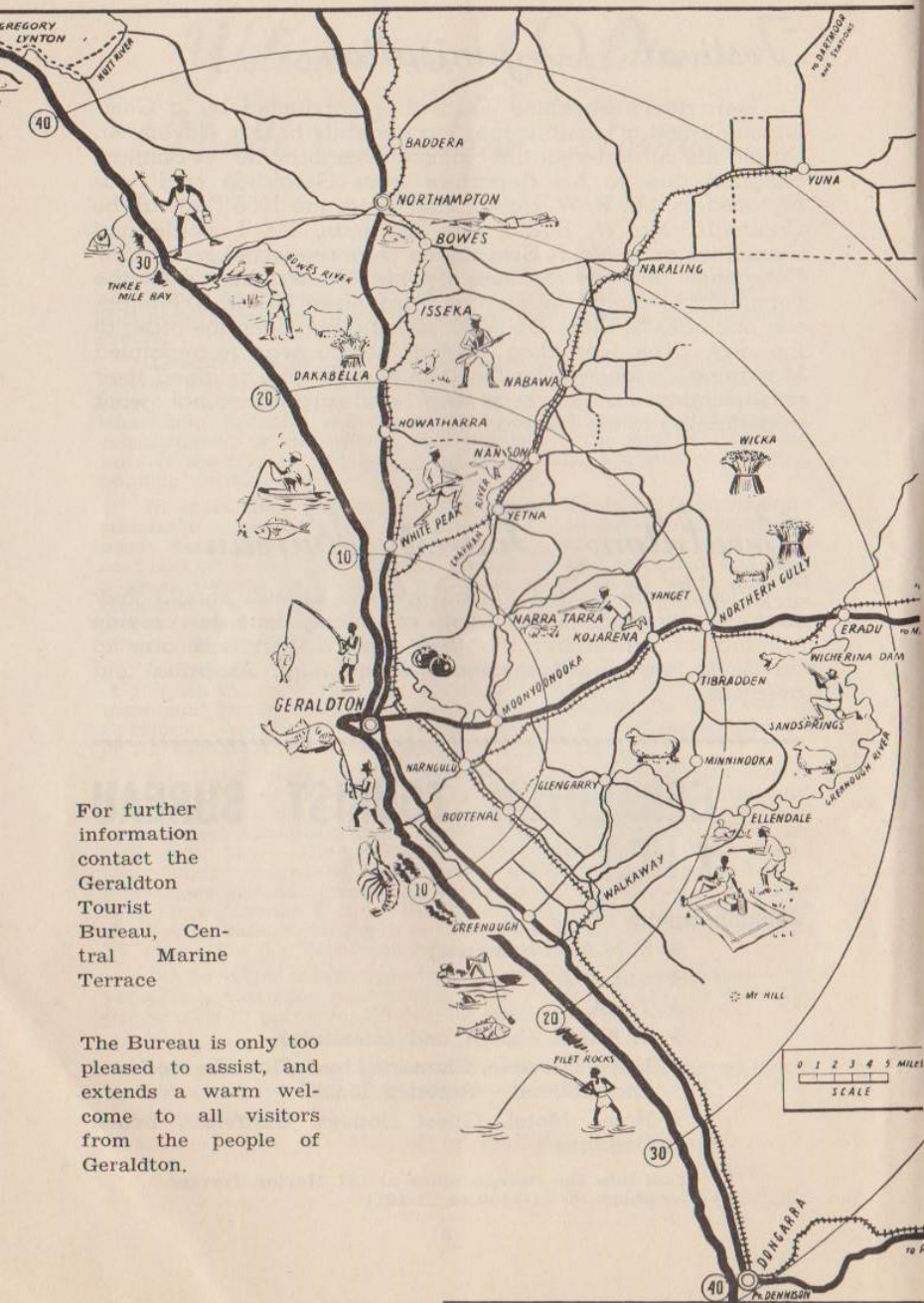
TOWN HALL—Corner Eleanor and Durlacher Streets.

GERALDTON YACHT CLUB HALL—Marine Terrace on Foreshore, opposite Radio Theatre.

SPALDING PARK — Four miles north on North-West Coastal Highway at Chapman Bridge.

For further information contact the Geraldton Tourist Bureau, Central Marine Terrace

The Bureau is only too pleased to assist, and extends a warm welcome to all visitors from the people of Geraldton.



EXHIBITIONS

GERALDTON ART SOCIETY

Cultural Trust Library Building, Marine Terrace.
TOM WARDLE \$200 ART PRIZE — Oil Painting. Open to West Australian artists — any subject.
Other sections: Victoria District residents for oils, water colours and beginners.
Geraldton Art Society Prize and Patron's Prize, open to Art Society Members — any subject, any medium.
Exhibition OPEN DAILY, 26th August - 3rd September — 10 a.m. - 10 p.m.
Opening and Presentation of Prizes on Saturday, 26th August, at 8 p.m. to be followed by a Special Programme including a Film and Talk by Mr. Frank Norton.
Exhibition will be judged by Mr. Frank Norton, Director of the W.A. Art Gallery.

GERALDTON COMMUNITY CENTRE

Local Exhibits: Pottery, Art Exhibition, Shells, Gemstones and Handwork.
OPEN DAILY: 2 - 5 p.m.
ADMISSION: 25 cents (including afternoon tea).

SEA SHELL COLLECTION

This large collection is displayed at Mr. and Mrs. G. Barker's Shell Museum, 114 North-West Coastal Highway.
OPEN: DAILY 9 a.m. - 10 p.m.
ADMISSION: Adults 20 cents, Children under 12 FREE, Children over 12 5 cents, Pensioners 10 cents.

WARNAMEENIA BIRD SANCTUARY

Mr. and Mrs. Merv Criddle have kindly opened this attraction for visitors.

GEMINI 10 SPACE CAPSULE and Photographic Display Panels

The Gemini 10 Space Capsule which made many orbits around the earth at approximately 18,000 m.p.h. and a successful re-entry will be on show at—
Rear of LIN McCURRY & CO. TYRE SERVICE, Marine Terrace.
OPEN: Wednesday, 30th August and Thursday, 1st September — 9 a.m. - 9 p.m.

TIETZEL SHELL COLLECTION and ABORIGINAL ART DISPLAY

Seamen's Mission Hall, Marine Terrace.
OPEN: Monday, 28th August - Saturday, 2nd September.
9.30 a.m. - 12 noon. 1.30 p.m. - 4.30 p.m.
7 p.m. - 10 p.m.
ADMISSION: Adults 30 cents, Children 10 cents. Under School age children accompanied by parents FREE.

GERALDTON HISTORICAL MUSEUM

"WONGA PARK," Greenough, featuring furnishings of 1860.
OPEN: Daily, 2 p.m. - 5 p.m.
ADMISSION: Adults 30 cents, Children FREE.

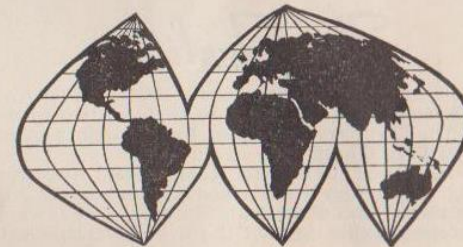
Geraldton

Regional Promotion Committee

This Committee of six members is in its third year of existence during which time it has demonstrated to both the public of Geraldton and those people in other parts of the State who are interested in Regional Development that small and enthusiastic committees can achieve worthwhile results.

In co-operation with the Department of Industrial Development this Committee is undertaking a Resources Survey for the region which extends from the Northampton Shire in the north to the Coorow Shire in the south and east to Morawa Shire. This Survey obviously requires and is getting co-operation of shires and other interested groups in the region. The Survey is a pilot scheme for that which may be introduced in other parts of the State. A major segment which has already commenced is the tourist survey which is being conducted in two phases. The first phase covers the collation of information concerning the facilities and items of places of interest for visitors. The second segment covers the collating of the number of visitors to each area and also the length of their stay, type of accommodation used and the area from which the visitors came.

Geraldton Sunshine Festival visitors are requested to co-operate in this scheme and ensure that they complete an Area Visitor Survey Card.



INTERSTATE & INTERNATIONAL TRAVEL SERVICE

AIR · SEA · LAND



MAC. ROBERTSON MILLER AIRLINES LIMITED

A MEMBER COMPANY OF ANSETT TRANSPORT INDUSTRIES LIMITED

FESTIVAL PERSONALITIES

Mr. G. M. Bunning

MR. G. M. BUNNING, Vice-President of the West Australian Chamber of Manufacturers Inc.

The official opening of the Geraldton Sunshine Festival this year will be performed by MR. G. M. BUNNING. More usually known as "Tom," he is joint managing director of Bunning Timber Holdings.

Born and bred in this State, being educated at Scotch College, Mr. Bunning is a qualified accountant and, for a long time, a notable golfer on a low handicap.

He is married with two children, son in the business and a daughter at the University.

During the war, Mr. Bunning was a company commander of the 2/4th Machine Gun Battalion and was captured in Singapore in 1942. His prisoner-of-war days included a period in the notorious Burma area.

Mr. Bunning is a member of the boards of the A.M.P. Society, Metro Brick Holdings and Peters Ice Cream in Western Australia and of the Australian Boards of Associated Electrical Industries, British Petroleum and Vickers Australia Limited.

He is also vice-president of The West Australian Chamber of Manufacturers, Inc. in which organisation he takes a very active interest.

In between all of these duties, Mr. Bunning still finds time to play golf and some tennis.

The Twiliters

Due to their great popularity at the 1966 Festival the Twiliters are travelling especially to Geraldton to perform two concerts during the Festival. The Twiliters are billed for all their performances as "Australia's Top Folk Group."

This was also their billing for their recent two-week tour of Vietnam during which they entertained approximately 10,000 troops from the Australian and American Forces. They were the first Australian performers ever to visit the U.S. Seventh Fleet in action.

H.M.A.S. Moresby

The Festival Committee is sure that both the people of Geraldton and the visitors to Geraldton will welcome the visit by H.M.A.S. Moresby from the 28th to 30th August.

This ship is the first in the R.A.N. to be designed for the hydrographic survey and oceanographic role and is 314ft. in length with a displacement of 2,500 tons. The Moresby has a complement of 130 officers and men.

Amongst the special surveying equipment are three 34ft. motor boats fitted with echo sounders and a helicopter.

It is not known whether the complement of H.M.A.S. Moresby will climb the range of hills behind Geraldton which bear the same name as their ship, i.e. Moresby Range.

FRIDAY, 25th AUGUST, 1967

9.30 p.m.—CROWNING OF THE FESTIVAL QUEEN

Town Hall.

Organised by the Rotary Club of Geraldton.

Having been previously judged, the winner will be announced then officially crowned by Mr. A. C. Mahajan, West Australian Manager, Air India.

See Page 29 for details of Festival Queen Competition.

SUNSHINE FESTIVAL BALL

Town Hall.

Organised by the Apex Club and Festival Committee.

Featuring music by the G.T.A. Group with vocalist.

Refreshments available from licensed bar until 1.30 a.m. Supper provided.

Dancing concludes at 2 a.m. — Cost \$3 per person.



MR. G. M. BUNNING

Vice-President, West Australian Chamber of Manufacturers Inc.

Mr. Bunning will declare the Festival open at the Recreation Ground at 2.15 p.m. on Saturday, August 26th.

SATURDAY, 26th AUGUST, 1967

1.30 p.m.—GRAND FESTIVAL PARADE

Conducted by the Geraldton Sub-Branch R.S.L.

Marshal: Mr. Lin McCurry.

Featuring the 1967 Sunshine Festival Queen and contestants, many colourful floats, clowns and novelties.

Geraldton Town Band.

Geraldton Caledonian Pipe Band.

Western Command Band.

2.15 p.m.—OFFICIAL OPENING

Recreation Ground.

Address of Welcome by the Mayor of Geraldton — Mr. C. S.

Eadon-Clarke, J.P.

The formal opening will be performed by Mr. G. M. Bunning, Vice-President of the West Australian Chamber of Manufactures Inc.

2.45 p.m.—FESTIVAL FANFARE

Conducted by the Geraldton Sub-Branch R.S.L. in conjunction with the Sunshine Festival Committee at the Recreation Ground.

Organisers: Mr. John Spendlove and Mr. Bob Schurmann.

The GIRLS RHYTHMIC LEAGUE presents the 1967 State Training Junior Squad which will represent W.A. in Ballarat in October at the Australian Calisthenics Championships.

Sponsored by COCA COLA BOTTLERS (Perth) Pty. Ltd. GERALDTON BUILDING COMPANY'S \$200 LOG CHOPPING CONTEST featuring top-line choppers from the South-West.

SHEEP DOG EXHIBITION.

An exhibition in keeping with the district's farming interests.

This event is sponsored by "Wesfeeds," a company formed on July 1 by the merging of the stockfeed interests of Messrs. W. Thomas and Co. (W.A.) Ltd. and Westralian Farmers Co-operative Limited. They not only make excellent dog feed, but feed for all classes of stock including cattle, sheep, pigs and chickens; in fact a full range to cover all your requirements.

The GERALDTON PONY CLUB will present a first-class exhibition of Show Jumping.

Novelty Cycle Race and Display Marching by the

Western Command Band.

Bars, Teas and Refreshments Available.

8.00 p.m.—"THE OKLAHOMA SHOW"

Town Hall.

Presented by Donald Cameron Productions of Sydney featuring DONALD CAMERON, VALMAI JOHNSTON and IVAN PETCH.

Sponsored by "TOM THE CHEAP GROCER."

Admission: Adults \$1.25, Children 75c.

9.00 p.m.—DANCING

Yacht Club.

Watch Press for further details.

A Great Festival of Savings!



TOM - THE - CHEAP GROCER Marine Terrace, GERALDTON

Tom Wardle has once again shown his willingness to sponsor a first event at our Sunshine Festival and the Committee is most grateful for his large and continued support. "TOM'S" contribution this year is to sponsor the visit of Donald Cameron Productions who will perform *The Oklahoma Show*

List of Church Services during the Festival

ANGLICAN CATHEDRAL OF THE HOLY CROSS

Sunday— 7.00 a.m. : Holy Communion.
8.00 a.m. : Solemn Eucharist.
7.30 p.m. : Evensong and Sermon.

ANGLICAN PARISH OF BLUFF POINT (St. George's)

Sunday— 7.30 a.m. : Holy Communion.
7.30 p.m. : Evensong.
10.00 a.m. : Holy Communion (3rd Sept. only).

BAPTIST CHURCH (Cnr. Quarry Street and Eastern Road)

Sunday— 9.30 a.m. : Sunday School.
11.00 a.m. : Morning Service.
7.00 p.m. : Evening Service.

CHURCH OF CHRIST

Sunday— 9.30 a.m. : Sunday School.
11.00 a.m. : Communion Service.
7.15 p.m. : Gospel Service.
At the Chapel in Augustus Street.

METHODIST CHURCH (Shenton Street)

Sunday— 11.00 a.m. : Divine Worship.

PRESBYTERIAN CHURCH

Sunday— 9.30 a.m. : Family Worship and Sunday School.
7.30 p.m. : Evening Service.

ST. FRANCIS XAVIER'S CATHEDRAL

Sunday— 7.00 a.m. : Mass.
9.00 a.m. : Mass.
10.00 a.m. : Mass.
7.00 p.m. : Evening Mass.

ST. LAWRENCE'S CHURCH (Bluff Point)

Sunday— 7.30 a.m. : Mass.

ST. JOSEPH'S CHURCH (Beachlands)

Sunday— 8.00 a.m. : Mass.

ST. PATRICK'S CHURCH (Wonthella)

Sunday— 9.00 a.m. : Mass.
Sunday— 8.00 a.m. : Mass (Rangeway State School).

SALVATION ARMY (Fortress, Lester Avenue)

Saturday— 7.15 p.m. : Open Air Witness, Marine Terrace.
Sunday— 11.00 a.m. : Morning Service.
6.30 p.m. : Open Air Witness, Marine Terrace.
7.30 p.m. : Evening Service.

SEVENTH DAY ADVENTIST

Saturday— 9.30 a.m. : Bible Study.
11.00 a.m. : Service.
2.30 p.m. : Young People's Meeting.
At the Church in Shenton Street.

COMBINED WORSHIP

Sunday, 3rd September : 7.30 p.m. in the Cathedral of the Holy Cross.

SUNDAY, 27th AUGUST, 1967

7.00 a.m. and Onwards—CHURCH SERVICES

10.00 a.m.—SEVENTH ANNUAL OPEN SCRAMBLE

Geraldton Motor Cycle Club—Waggrakine Course.

FAST — SPECTACULAR — THRILLING

State's leading riders participating.

ADMISSION — Adults 40 cents. Refreshments and lunch are available.

10.00 a.m.—250cc. Solo Scratch Race (8 laps).

10.45 a.m.—350cc. Solo Scratch Race (8 laps).

11.30 a.m.—500cc. Unlimited Solo Scratch Race (8 laps).

LUNCH

2.00 p.m.—All Powers Trial Scratch Race "A" and "B" Grade (6 laps).

3.00 p.m.—All Powers Geraldton Open Scramble (25 laps).

10.00 a.m.—ALL DAY GYMKHANA

At the Utakarra Racecourse.

A full day of Gymkhana Events conducted by the Geraldton Pony Club with Trophies for All Events.

Light luncheons, afternoon teas and cool drinks available.

ADMISSION : 30 cents. No charge for children.

11.00 a.m.—BAND CONCERT—Western Command Band

Geraldton Regional Hospital.

1.00 p.m. - 5.30 p.m.—GERALDTON HISTORICAL MUSEUM

GALA DAY

"WONGA PARK," Greenough—Many new features to be seen in the Museum. Buggy rides for the children.

ADMISSION : 30 cents. Children FREE.

Afternoon tea and cool drinks available.

2.30 p.m.—FOOTBALL

Great Northern National Football League Fixtures at Recreation Ground.

12 noon — Rovers v Railways.

2.30 p.m. — Towns v Chapman Valley.

Northampton, Mullewa and Brigades, bye.

8.15 p.m.—"THE OKLAHOMA SHOW"

Town Hall.

Presented by Donald Cameron Productions of Sydney featuring DONALD CAMERON, VALMAI JOHNSTON and IVAN PETCH.

Sponsored by "TOM THE CHEAP GROCER."

Admission : Adults \$1.25, Children 75c.

MONDAY, 28th AUGUST, 1967

6.00 a.m. - 6.00 p.m.—CHILDREN'S FISHING COMPETITION

For Children Under 16 Years of Age Only.

Fishing area — Inside Geraldton Harbour only from shore, beach or jetty. NOT FROM BOATS.

6.00 a.m. - 6.00 p.m.—FISHING COMPETITION (All Ages)

Fishing area — From Back Beach to Lighthouse, thence to Durlacher Street. Fishing from shore or jetties only — NOT FROM BOATS.

The winner will be the person catching by line the fish that weighs the heaviest. All fish must be weighed in at the Oceanic Fish Supply by 6 p.m. Persons wishing to record their catch must produce a witness and both must sign the official sheet.

PRIZES DONATED BY THE OCEANIC FISH SUPPLY.

WATCH FOR THE ARRIVAL OF THE ROYAL AUSTRALIAN NAVAL SHIP "H.M.A.S. MORESBY."

9.15 a.m.—TOWN TOUR

Viewing no less than 35 places of interest.

Returning by lunchtime. Adults: \$1; Children, 50 cents.

Bookings at Tourist Bureau.

12 noon-2.00 p.m.—CRAVEN "A" HOLE-IN-ONE GOLF COMPETITION

Queen's Park (behind the Civic Centre).

\$500 PRIZE — FOR A HOLE-IN-ONE.

20 cents a shot.

See Page 15.

2.00 p.m.—"WOOTAKARRA"—Tug Boat Rides for Children

By Courtesy of the Geraldton Tug Co.

Tug Boat Rides around the Harbour for children. No charge.

8.00 p.m.—CAMERA CLUB

Civic Centre.

A viewing of a selection of slides with commentary from an Inter-Club competition to be followed by the announcement of winning slides and presentation of prizes.

8.15 p.m.—BALLET

Town Hall.

"CENDRILLON" (Cinderella).

A well-known and delightful ballet starring Carole Heath as Cinderella and Keith Van Dyke as the Prince.

Admission: Adults 60c; children 30c.

Tickets available at door.

THE CRAVEN "A" GOLF HOLE - IN - ONE COMPETITION

DAILY from MONDAY to FRIDAY at QUEEN'S PARK (behind the Civic Centre) between 12 NOON and 2 P.M.

Try your skill with a golf stick to win \$500 for a Hole-in-One
Only sticks and balls provided may be used

COST — 20c per shot

CRAVEN "A" PRIZES

NEAREST TO PIN OVER ALL DAYS—\$70 CASH—\$20 TROPHY

SECOND—\$30 CASH—\$10 TROPHY

THIRD—\$10 CASH—\$10 TROPHY

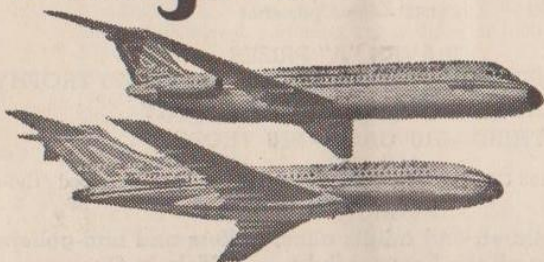
Members of the GERALDTON GOLF CLUB have offered their services to conduct this event

All can try, children and adults alike, golfers and non-golfers, to bring off the Festival fluke — A Hole-in-One



"THE TWILITERS"

DC-9/727 Ansett-ANA Fan Jets



get you there
on time
more of the
time

Our kind of new DC-9 Fan Jets — the kind with punctuality built in — are swift sleek Good Companions for our Boeing 727 Fan Jets.

Together, Fan Jets are providing the pure jet fleet we need to get you away on time and **there** on time. They're helping Ansett-ANA to keep flying the most punctual jets in Australia.

FLY **ANSETT-ANA**

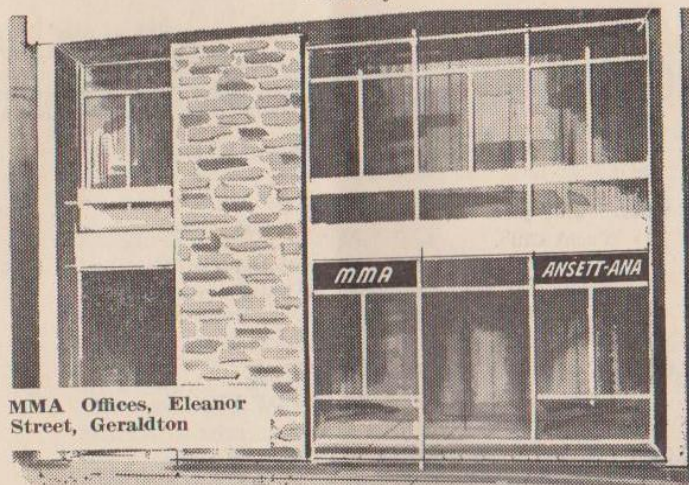
Australia's Most Experienced Airline.
A Division of Ansett Transport Industries.

ANS190/AS

Stars from the Oklahoma Show flew Ansett-A.N.A. from Sydney and will also return on Ansett-A.N.A.'s Boeing Jet Services

MMA's new Geraldton Office in the Masotto Building, Eleanor Street, provides a wide range of services, planned to meet the growing requirements of the Geraldton District

Book at MMA, to fly anywhere in Western Australia or the Northern Territory



MMA Offices, Eleanor Street, Geraldton

From room to road is as easy as saying "AVIS PLEASE"

It's simple. Just pick up your phone any time and Avis will have the car you like to drive waiting for you when you want it. Then drive it as your own for as long as you need it. When you drive Avis, you're following the lead of 7 out of 10 Australians who rent cars.



We try harder

TUESDAY, 29th AUGUST, 1967

H.M.A.S. MORESBY

Is the first ship of the R.A.N. to be designed for the hydrographic surveying and oceanographic role. The Moresby was built at Newcastle State Dockyard and launched on September 7th, 1963. It was commissioned into the Naval Service on March 6th, 1964.

Watch Press for details of inspection times.

12 noon - 2.00 p.m.—RECORD HOP

Yacht Club.

Compered by John Cartwright and Ian Hasleby of 6GE.
Equipment kindly provided by Musgroves.

ADMISSION : 25 cents.

2.00 p.m.—RADIO THEATRE MATINEE

"THE LION" plus "30 YEARS OF FUN"

2.30 p.m.—FESTIVAL MANNEQUIN PARADE

Marquis Motel. See Page 19 for details.

8.00 p.m.—"THE TWILITERS" FOLK CONCERT

Town Hall.

The Festival Committee proudly presents Australia's Top Folk Group.

ADMISSION : Adults \$1, Children 60c.

8.00 p.m.—CAMERA CLUB

An interesting presentation of Slides and Movies from members of the Geraldton and District Camera Club.

8.00 p.m.—FESTIVAL MANNEQUIN PARADE

Marquis Motel. See Page 19 for details.

9.00 p.m.—DANCING

Yacht Club.

Watch Press for details.

RECURRING EVENTS :

EXHIBITIONS. See Page 6.

SHOWMEN'S ASSOCIATION. On Waterfront next to Library.

CRAVEN "A" HOLE-IN-ONE COMPETITION — Queen's Park behind the Civic Centre — Daily from 12 to 2 p.m.

TUESDAY, 29th AUGUST, 1967

2.30 p.m. - 8.00 p.m.—

FESTIVAL MANNEQUIN PARADE

THE SOCIAL HIGHLIGHT OF THE FESTIVAL

Afternoon Session commences 2.30 p.m. Evening 8 p.m.

All the latest Spring and Summer Fashions presented by—

BENNETT'S ELITE SUPPLY CO.

WRIGHT'S FASHION SALON

Guest Mannequin : Margaret Coufos.

Attractively presented at the MARQUIS MOTEL with musical items.

ADMISSION : 60 cents per person. Seating at tables for four. Savouries provided.

MARQUIS MOTEL — 2.30 p.m. and 8 p.m.

Box Plans Open Wednesday, 23rd August—Only at Bennett's Elite Supply Co.

Transport departs Geraldton Tourist Bureau at 1.30 p.m. to Swan Marquis Motel and returns at 5 p.m.

AERIAL SIGHTSEEING TOURS OF GERALDTON

Reasonably priced tours are available through:—

Geraldton Air Charter

Phone 21-2357 or Moonyoonooka 570 (after hours) for reservations

Geraldton Aero Club

Phone Moonyoonooka 534 or 21-2867 for reservations

WEDNESDAY, 30th AUGUST, 1967

DEPARTURE OF H.M.A.S. MORESBY

9.00 a.m.—CHILDREN'S PAVEMENT ART COMPETITION

To be conducted outside the Civic Centre, Cathedral Avenue. Be early, children, and bring your own box of coloured chalk. Report to Mr. M. Doye and his helpers at the reception table. Age will be taken into account when awarding prizes for the younger children. Entry fee: 5 cents. Judges kindly provided by Art Society — Mesdames Cobley and Andrews.

9.15 a.m.—SCENIC TOUR

An interesting and picturesque tour to ELLENDALE via Greenough River Mouth — Greenough Flats — Wonga Park Historical Museum — Walkaway — Wicherina Dam. Returning for lunch. Adults: \$2.00. Children: \$1.00. Bookings at Tourist Bureau.

10.00 a.m.—RODEO STREET PARADE

Led by Caledonian Society Pipe Band. All riders participating in the Rodeo will ride down Marine Terrace.

11.00 a.m.—RODEO

Full details on Page 21.

11.00 a.m. - 5.00 p.m.—WILDFLOWER DISPLAY

C.W.A. Hall, Marine Terrace. Presented by the Eradu Country Women's Association. A display of wildflowers from the surrounding district. **ADMISSION: 30 cents. Children FREE.** Light afternoon teas available.

7.00 p.m. - 11.00 p.m.—Come to Geraldton's

"PANKINA WARAKAI"
Marine Terrace, between Durlacher Street and Cathedral Avenue. Conducted by the Towns Football Club. Barbecues, Dancing in the Street, Fun of the Fair. Non-Stop Entertainment. Admission: Silver coin.

7.30 p.m.—FIREWORKS DISPLAY

Foreshore.

8.00 p.m.—"THE TWILITERS" FOLK CONCERT

The Festival Committee proudly presents Australia's Top Folk Group at the Town Hall. **ADMISSION: Adults \$1, Children 60c.**

8.00 p.m.—TV FILM SHOW

Cathedral of the Holy Cross.

RECURRING EVENTS:

EXHIBITIONS: See Page 6.
CRAVEN "A" HOLE-IN-ONE GOLF COMPETITION — See Page 15.
W.A. SHOWMEN'S ASSOCIATION — Opposite Police Boys Club.

WEDNESDAY, 30th AUGUST, 1967

10.00 a.m.—STREET PARADE

All Riders participating in the Rodeo will ride down Marine Terrace led by the Caledonian Society Pipe Band.

11.00 a.m.—SUNSHINE FESTIVAL 1967

RODEO

Affiliated with the Australian Rough Riders' Association. **THE WORLD'S ROUGHEST SPORT** at the Victoria District Turf Club Racecourse, featuring:

"THE SWAN BREWERY TROPHY"

\$250 Open Buckjump Championship

\$120 Open Steer Ride

Boans Ltd. \$120 Open Bareback Bronc

Lockes Ltd. \$60 2nd Division Buckjump

Ampol \$60 2nd Division Steer Ride

Bogle Bros \$40 Bulldogging

\$60 2nd Division Bareback.

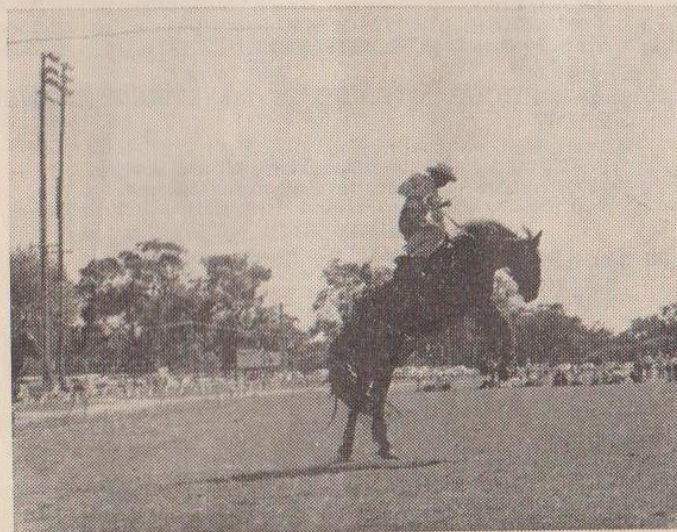
Magnus Motors \$30 Wild Horse Race

Waller's \$40 Open Roping

ADMISSION — Adults 80c, Children 20c

Bars, Light Luncheons, Refreshments and Teas.

Good viewing from all points.



THURSDAY, AUGUST 31st, 1967

10.30 a.m.—CHILDREN'S PICNIC

Page's Beach. Organised by R. Haddow.
Races, Sand Castle Competition, Treasure Hunt, etc.
A day of fun for the kids.

11.00 a.m. - 5.00 p.m.—WILDFLOWER DISPLAY

C.W.A. Hall, Marine Terrace.
Presented by the Eradu Country Women's Association.
A display of wildflowers from the surrounding district.
ADMISSION: 30 cents. Children FREE.
Light afternoon teas available.

12.30 p.m.—BISHOP'S BASH

Cathedral of the Holy Cross.

1.00 p.m.—SUNSHINE FESTIVAL GOLF CUP

Arranged by the Geraldton Golf Club at their course,
Rangeway.
An 18-hole Open Stroke Event. Visiting golfers welcome.

2.30 p.m.—CHILDREN'S MANNEQUIN PARADE

Birdwood House.
Conducted by R.S.L. Women's Auxiliary.
A wonderful afternoon of entertainment showing the new
season's wear. (Children's wear by courtesy of Woolworths
(W.A.) Ltd.).
ADMISSION: ADULTS 50c includes afternoon tea; Children
over 12 years 25c. Under 12 FREE.

2.30 p.m.—OFFICIAL OPENING of the SPRING FLOWER SHOW

Town Hall.
Conducted by the Geraldton Horticultural Society.
ADMISSION: 20 cents (afternoon tea 20c).
8.00 p.m. Sale of Flowers and Presentation of Trophies.

8.00 p.m.—POETRY RECITAL by Anthony Howes

RELIGIOUS BALLET.
Cathedral of the Holy Cross.

9.00 p.m.—DANCING, DANCING, DANCING

Yacht Club.
Watch Press for details.

RECURRING EVENTS:

EXHIBITIONS: See Page 6.
SHOWMEN'S ASSOCIATION: Opposite Police Boys' Club.
HOLE-IN-ONE GOLF COMPETITION — Queen's Park —
between 12 noon and 2 p.m. Your chance to win \$500.

21/1/68
7158 S/S Intro.
1. Murray Law, Money Law
2. Phillip W...
FRIDAY, SEPTEMBER 1st, 1967
HSEBW SYMB, Gregory DATA CAMPAIGNS

FRIDAY, SEPTEMBER 1st, 1967

7.30 a.m.—DEEP SEA FISHING

(Subject to Weather).
Open to men only. Numbers Limited — Be early!
Meals and gear to be supplied by competitors.
Competition is for person catching by line the fish that
weighs the heaviest.
Bookings at Geraldton Tourist Bureau.

9.30 a.m.—CHILDREN'S TOUR

A surprise tour for the children. Price: 25c

2.00 p.m.—CHILDREN'S PET COMPETITIONS

Organised by Mr. and Mrs. J. Spendlove.
FANCY DRESS DOG PARADE — Prizes—Prizes—Prizes
On the lawns next to the Presbyterian Church in Lester
Avenue. (Lawns by permission of the Presbyterian Church).
Each dog must be on a lead.
Judges — Mrs. A. Crothers and Mr. A. Williams.

3.30 p.m.—KITTEN PARADE

Town Hall.
Prizes — Prizes. Judge: Mrs. A. Williams.
BIRD PARADE — Geraldton Town Hall. Prizes — Prizes.
All birds must be in cages.

8.00 p.m.—RECITAL by ST. GEORGE'S CATHEDRAL CHOIR

Directed by Rev. Arthur Grimshaw.
"THE SILVER DOVE" — A Musical Morality.
Cathedral of the Holy Cross.

8.30 p.m.—BOXING COMPETITION

Town Hall.
Organised by the Police and Citizens' Youth Club.
12 Top Boxers from Perth — Watch Press for further
details.
ADMISSION: \$1.50 (Ringside); \$1.00; 50c. Gallery.
Winner of MR. GERALDTON COMPETITION will be
announced tonight.

9.00 p.m.—SUNSHINE FESTIVAL CABARET

Geraldton Yacht Club.
Good Band and Entertainers. Watch Press for details.

9.00 p.m.—START NESTLE'S SUNSHINE CAR TRIAL

PERTH-GERALDTON — Approximately 450 miles.
Starting point outside BOANS LTD., Morley Store.
\$270 in Prizes — 1st Prize Value \$110.

RECURRING EVENTS:

EXHIBITIONS: See Page 6.
W.A. SHOWMEN'S ASSOCIATION — Opposite Police Boys'
Club.
CRAVEN "A" HOLE-IN-ONE COMPETITION — Queen's
Park — 12 noon - 2 p.m. — Last day to win \$500.

① SISA HADLEY
23/1/68
Honby
8/3/68
on 'SUNSHINE'

SATURDAY, SEPTEMBER 2nd, 1967

JAYCEE GALA DAY

Organised by Geraldton Jaycees

UTAKARRA RACECOURSE
11.00 a.m. - 11.00 p.m.

ADMISSION — Adults 30c, Children 10c

F E A T U R I N G :

MOBIL SHEARING COMPETITION—

Open — 1st Prize \$200 and Gentleman's Wristlet Watch
Novice — 1st Prize Lister Handpiece
Relay — \$30 Winners take all

GIANT PUSH BALL COMPETITION

FISHING CASTING COMPETITION

Distance and accuracy competition — Competitors to supply own gear

ARMY DISPLAY

Featuring C.M.F. units in day displays and night displays in conjunction with a pyrotechnique exhibition.

PIE EATING COMPETITION

Entries accepted at the course.

MUSICAL ENTERTAINMENT

Band music and marching displays for all tastes. Pop music for the "Go-Go" fans during evening by "Tyroes."

ATHLETIC CARNIVAL PROGRAMME

1. Girls under 8 years — 50 yards.
2. Boys under 8 years — 50 yards.
3. Girls under 12 years — 75 yards.
4. Boys under 12 years — 75 yards.
5. Open 100 yards — Men.
6. Open 100 yards — Women.
7. Open Hurdles — 120 yards.
8. Boys under 16 years — 100 yards.
9. Girls under 16 years — 100 yards.
10. Football Relay — Open.
11. Football Relay — Nippers.
12. Open 440 yards — Men.
13. Football Kicking Competition — Open.
14. Married Women's 100 Yard Dash — Entry at post.
15. Open One Mile.

BARBECUES — Available after 5 p.m. — Meat on sale

FILMS — Sporting and Children's films shown during evening

MR. SUNSHINE FOOTBALLER

Distance and accuracy kicking competition.

Luncheons, afternoon teas, light meals and supper available

Liquor Bars

Refreshments

SATURDAY, SEPTEMBER 2nd, 1967

10.00 a.m. Onwards—FINISH NESTLE'S SUNSHINE CAR TRIAL

\$270 in prizes — 1st prize value \$110.

A most popular event efficiently conducted by W.A. Car Club.

Sponsored by The Nestle's Coy.

Cars will enter Geraldton via Brede Street, Eastern Road By-Pass, Eliot Street, Francis Street, Separation Point Drive, Marine Terrace, Eleanor Street, Cathedral Avenue to Civic Centre.

Look for the car best decorated with Nestle's slogans.

10.30 a.m. - 5.30 p.m.—MULLEWA AGRICULTURAL SOCIETY SHOW

A display of the district's agricultural wealth.

11.00 a.m. - 11 p.m.—JAYCEE GALA DAY

Utakarra Racecourse.

Organised by the Geraldton Jaycees.

See Page 24 for details.

1.30 p.m. and 3.30 p.m.—SOCCER FIXTURES

Spalding Park.

8.00 p.m.—PATCH THEATRE presents

"QUEEN JULIA" with John Atkins and Lloyd Norris.

ADMISSION : Adults 80c, Children 20c.

8.00 p.m.—"HERE TODAY" by Nevil Malin

A comedy about why we are here.

Cathedral of the Holy Cross.

9.00 p.m.—DANCING, DANCING, DANCING,

Yacht Club.

Watch Press for details.

RECURRING EVENTS :

EXHIBITIONS : See Page 6.

SHOWMEN'S ASSOCIATION. Opposite Police Boys' Club.

SUNDAY, SEPTEMBER 3rd, 1967

MASTERS DAIRY
"AROUND THE TOWN"
CYCLE RACE

Presented by the Geraldton Cycle Club

\$300 Prizes — \$300 Prizes — \$300 Prizes

SASHES AND TROPHIES FOR 1st PLACE
SENIORS AND JUNIORS

9.00 a.m.

SENIORS — 65 MILES — PRIZES FROM \$80 - \$2

1st Prize, \$80; 2nd Prize, \$35; 3rd Prize, \$20; 4th Prize, \$10;
5th Prize, \$6; 6th Prize, \$4; 7th Prize, \$3; 8th Prize, \$3;
9th Prize, \$3; 10th - 14th Prize, \$2 each.
Fastest Time, \$35.

JUNIORS — 35 MILES — PRIZES FROM \$30 - \$2

1st Prize, \$30; 2nd Prize, \$14; 3rd Prize, \$6; 4th Prize, \$3;
5th Prize, \$2; 6th Prize, \$2.
Fastest Time, \$14.

SUB-JUNIOR — "A" GRADE, 15.6 MILES
"B" GRADE — 7.8 MILES

Racing commences from **YACHT CLUB**, North-West Coastal Highway to 11-mile peg, return Mabel Street, Pope Street, Rowe Street, Flyover Bridge, Eliot Street, Crowther Street and **MARINE TERRACE**.

5 LAPS WILL BE IN THE CITY AREA — ORD STREET, POPE STREET, ROWE STREET, MARINE TERRACE.

Good viewing from all points.

ALL PRIZE MONEY DONATED BY MASTERS DAIRY LIMITED

\$300 ————— \$300 ————— \$300

SUNDAY, SEPTEMBER 3rd, 1967

7.00 a.m. Onwards—CHURCH SERVICES

Full details on Page 12.

8.30 a.m.—MASTER'S DAIRY "ROUND THE TOWN" CYCLE RACE

See Page 26 for full details.

9.00 a.m.—SCENIC TOUR — MURCHISON GORGES and KALBARRI via

Northampton — Galena — Ajana — the Gorges — Kalbarri (tourist resort). A trip of changing scenery and beauty throughout the year.

Returning by 6 p.m.

Adults : \$5.00; Children, \$3.00.

10.00 a.m.—BAND CONCERT—Geraldton Town Band
Geraldton Regional Hospital.

2.00 p.m. - 5 p.m.—GERALDTON HISTORICAL MUSEUM

"WONGA PARK," Greenough.

ADMISSION : 30 cents; Children FREE.

2.30 p.m.—FOOTBALL FIXTURES

First Semi-Finals.

7.30 p.m.—COMBINED WORSHIP

Cathedral of the Holy Cross.

8.00 p.m.—GERALDTON FILM SOCIETY

Presents a programme of interest in films on the first Sunday of every month. Visitors are welcome at the Civic Centre.

CHILDREN'S ACTIVITY TIME SOCIETY

Will present two programmes for children four to ten years, each to be followed by an activity time.

Morning tea will be provided, and the charge is 50c per child for each day.

September 4th — 9.30 a.m. : Yacht Club Hall, "The Magic Toyshop Ballet."

September 5th—9.30 a.m. : Yacht Club Hall, Gerry Atkinson and his Guitar with "Songs and Storytime."

Bookings at Lockes from 2.30 - 4.30 p.m. weekdays from 14th to 25th August.

Acknowledgments . . .

The organisation of the Ninth Annual Sunshine Festival was conducted on the premises of the Geraldton Tourist Bureau, who were appointed managing organisers by the elected committee, without whose help the staging of this enormous task would have been impossible. I welcome this opportunity to pay tribute, and publicly thank them.

Their efforts would have been ineffective had it not been for the wonderful co-operation extended by individuals and organisations concerned with a wide variety of activities and interests.

Due to the unavailability of the normal venue for the Trade and Industries Fair this event could not be held this year. As Jaycees wished to participate in the Festival the Rodeo was switched from the normal position on the second Saturday of the Festival to the Wednesday to enable the Jaycees to conduct a Gala Day on the Saturday. This Gala Day will provide entertainment for the whole family for the afternoon and evening. To ensure the financial success of the Rodeo it was necessary to arrange a half-day holiday and the Committee is most grateful for the support given by the Retail Traders' Association, the Chamber of Commerce, the Town of Geraldton Council and those other bodies who lent their support to obtain a half day holiday.

The Town of Geraldton Council, has, as always, been most co-operative in a multitude of ways. To the town's service organisations such as R.S.L., Apex, Rotary and Jaycees, go our thanks for another year of sterling efforts.

Acknowledgment must also be made to the people of Geraldton who play host to Australia for nine days of "Fun in the Sun." Whether participating in the Festival as members of a sub-committee directly responsible to the organisers, as Mr. Maslen of the Rodeo Committee, or as a member of the various organisations or as an individual, our sincere thanks go to one and all. Without the willingness of these people this Festival would not be able to take place.

As in past years, Mr. T. E. Wardle, M.M.A. and Ansett-A.N.A. have been most generous in their support of the Sunshine Festival, along with such old friends as Coca Cola, Peters Ice Cream, Avis Rent-a-Car, Nestle's, Swan Brewery, Craven A, Boans Ltd., Lockes, Ampol Petroleum, Masters Dairy, Geraldton Building Company, Magnus Motors, Wallers and many more too numerous to mention here who believe in Geraldton and the Sunshine Festival. To these we express our sincere thanks with the hope that they will continue to assist us so generously. A newcomer to support the Sunshine Festival is Wesfeeds Pty. Ltd. and we express our appreciation to this Company and hope that they will be long lasting friends.

Mention must also be made of the assistance given by the Armed Forces who contribute to make our Festival a successful one. Also to such Clubs as the Geraldton Cycle Club, the W.A. Car Club and many others who have worked tirelessly for the success of this nine days of "Fun in the Sun."

Our publicity, as always, has been in good hands and for this we thank the Radio Stations 6GE and 6GN, W.A. Newspapers, The Geraldton Guardian and Country Newspapers.

The ready assistance given so unstintingly by one and all to organise the Ninth Sunshine Festival is greatly appreciated and it is with regret that I am unable to mention all these wonderful people but hope that all will take this as a personal "thank you" from my committee and myself.

W. G. RUDD, Chairman.

The Festival Queen Competition

This competition has been organised by the Rotary Club of Geraldton for the past eight years. The highlight of the Festival Official Opening will come when the State Manager for Air India, Mr. A. C. Mahajan, performs the crowning ceremony assisted by sari-clad Air India hostesses at the Town Hall at 9.30 p.m.

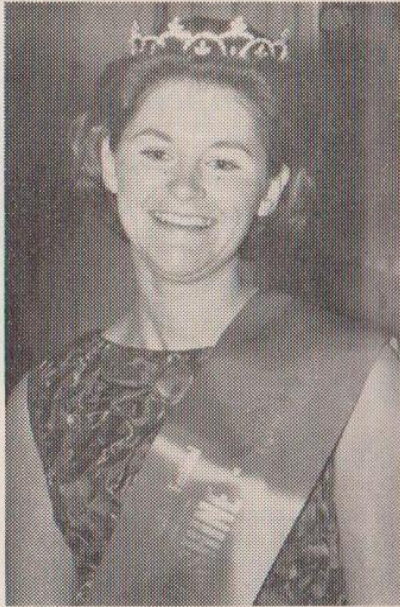
The competition is open to all unmarried girls not less than 17 years of age who live within the Town of Geraldton or the Shires of Northampton, Chapman Valley, Mullewa, Irwin and Greenough.

Appearance, speech, deportment and general knowledge were the main points considered by the judges. The winner will receive a week's holiday to Singapore travelling by Air India.



PREVIOUS SUNSHINE FESTIVAL QUEENS

1966	Anthea Fawcett
1965	Patricia McDonnell
1964	Delores Morris
1963	Suzanne James
1962	Moira Johnson
1961	Valma Cope
1960	Pam Evans
1959	Frances Clune



**Miss
Anthea Fawcett**
**1966 Sunshine
Festival Queen**

The 1966 Sunshine Festival Queen, Miss Anthea Fawcett, who is pictured above proved to be a very good ambassador for the Geraldton district during her visit to Fiji. Miss Fawcett in addition to being the Sunshine Festival Queen for that year was also judged the representative of the Northern Districts in the Miss Australia quest.

Each year the leading male and female member of the Junior Farmers' organisation in Western Australia is selected to represent the Junior Farmer movement in an Australia-wide contest involving district and general knowledge and Anthea Fawcett was the representative in this contest for Western Australia in the female section.

The Geraldton Story

LOCATION

The town of Geraldton is situated along the shore of Champion Bay on the West Coast of Australia at lat. 28 deg. 42 min. south, long. 114 deg. 36 min. east.

POPULATION

Town : Approximately 13,500 (1965).
Victoria District : Approximately 25,000.

HISTORY AND DEVELOPMENT

In 1822 Lieutenant King was sent from Rottneest Island to complete a survey of the coast north to Gantheaume Bay. He noted the unusual shape of the hills to the east of Geraldton. In 1839 Captain George Gray in the course of his forced march from Gantheaume Bay, at the Murchison River mouth to the Swan River colony sited and reported on the fertility of the soil in the area where Geraldton now stands. The settlement of the Champion Bay area followed rapidly on the exploration of the Gregory brothers and the discovery of lead and copper ore near the site of Northampton, 31 miles north in 1848. The Governor of the colony, Sir Charles Fitzgerald, wanting to see for himself the possibilities of the mineral deposits, voyaged from Fremantle in H.M.S. Champion in December 1848. The town of Geraldton, named in honour of the Governor, was laid out in 1850 by A. C. Gregory when he surveyed 40 half-acre blocks. The sale of these lots took place at a public auction in Perth in June, 1851, at an upset price of \$20 each. A jetty was built in 1860 and port facilities improved. In 1871 Geraldton was gazetted as a Municipality. In 1872 tenders were called to build the State's first railway line from Northampton to Geraldton, but it was not until July 26, 1879 that the line was opened for traffic. In 1894 Geraldton was linked by rail to Perth by the opening of the Midland Railway Company's line through Moora.

Local Authority : Geraldton Town Council.

Rainfall Average : 20 inches.

Average Temperature : Summer (Dec.-Feb.) 83.9 deg. Winter (June-Aug.) 68.7 deg.

ELLENDALE
POPULAR PICNIC SPOT



INDUSTRIES

WHEAT

Geraldton is the port for the export of the district's wheat production of approximately 12,000,000 bushels. The grain terminal holds 59,000 tons of grain and cost \$2,800,000 to build.

SHEEP

The number of sheep carried in the Victoria District (as at 30-6-66) was 1,958,374 and the number of lambs marked for 1966 was 521,262. The wool clip totalled 16,909,160lb. for the year ended 30th June, 1966.

MINING

Lead, manganese and iron ore are mined in the Victoria District. On the 17th March, 1966, the first shipment of iron ore of a 5,100,000-ton contract left Geraldton Harbour for Japan on the Margaret Maru. This ore is mined at the Koolanooka Hills deposits near Morawa and railed to the stockpile at Geraldton awaiting shipment. To date approximately 760,000 tons has been exported.

CRAYFISHING

The catching of the famous crayfish employs some 500 men on 250 boats. The seasons are from November to February and March to August (Abrolhos). In 1965 the catch was approximately 7,000,000lb., valued at \$4,900,000.

BUILDING

The Geraldton Building Co. employs 330 people, mainly tradesmen, and have completed such projects as Township of Talgarno, Carnarvon and Muchea Tracking Stations, Geraldton Regional Hospital and Anglican Cathedral of the Holy Cross. This company has shown itself to be progressive and competitive with any building organisation in Western Australia.

TOMATOES

The season for growing tomatoes is from April to December, during which time some 250,000 cases valued at \$600,000 are exported.

SUPERPHOSPHATE WORKS

Fertilisers for the district are produced locally by Cuming Smith & B.P. who obtain their raw materials, namely phosphate rock and sulphur, from Christmas Island and the Mexican Gulf.

TRANSPORTATION

Geraldton is connected to Perth by excellent daily air, rail and road services.

WATER SUPPLY

Source of supply is mainly from bores varying in depth from 200-500 feet in the Wicherina area, some 23 miles east of Geraldton. This source is augmented by 2,000 acres of catchment area: Seventeen acres of the reservoir is roofed with asbestos sheeting to minimise evaporation. It is anticipated that by 1970 water will also be supplied from the Allanooka water scheme which currently pipes a supply to the Dongara area.



Peters

DRUM STICK

You can't beat it. Delicious, creamy vanilla ice cream topped with chocolate and crusted with nuts. Enjoy a Peters Drumstick ... big'n'good.

**MADE BY PETERS
SO YOU KNOW
IT'S GOOD**