



# FORESHORE

SNAPSHOTS IN TIME



**017:** ESPLANADE JETTY SWIMMING RACES c1920s **144:** LOOKING OVER HARBOUR AND JETTIES, MISSION TO SEAMAN AND ROWING SHED IN FOREGROUND 1920s, TAKEN FROM FLAG STAFF HILL **148:** SHOWING DAMAGE TO FORESHORE ALONG RAILWAY YARDS NEAR DURLACHER STREET AFTER THE STORM GERALDTON WA 1930s **171:** BACK BEACH GERALDTON c1930'S



MURRAY VIEWS NO. 16. YACHTING, GERALDTON HARBOUR, W.A.



192: GREENOUGH RIVER AND BEACH 8TH APRIL 1939 EASTER SUNDAY 8TH APRIL 1939 553: GERALDTON ROWING CLUB MEMBERS ON ESPLANADE FORESHORE 1926 559: GERALDTON FORESHORE, VIEW FROM ORIGINAL RAILWAY STATION LOOKING NORTHEAST. RAILWAY JETTY AND VIADUCT IN BACKGROUND 1930s 567: VIADUCT AND RAILWAY JETTY c.1925-30



MURRAY VIEWS No. 12. WEST END BEACH, GERALDTON, W.A.



569: SWIMMERS GERALDTON FORSHORE c1930s 674: ESPLANADE BEACH / FRONT BEACH GERALDTON 1941. MRS PIRKINS, BERYL, MRS MCLAUGHLIN, MRS DUNN, MRS ARCHIE, MRS RUTHVEN?, RAYMOND, DON & PAT 675: WEST END BEACH 1941 BERYL, MARJ, ROSSIE, DON & SHIRLEY 683: GERALDTON HARBOUR & YACHTS 'IN FOREGROUND SHOWING THE ENTRANCE TO THE HAROUR KNOWN AS 'THE GAP' & BOAT SLIP c1941



MURRAY VIEWS NO. 14. YACHTS AT WEST END BEACH, GERALDTON, W.A.



684: FISHING YACHT 'ISOBEL' GERALDTON HARBOUR, WINNER OF THE FISHING BOAT RACE c1941 691: FISHING BOATS AT ANCHOR GERALDTON HARBOUR 1941 722: 736:

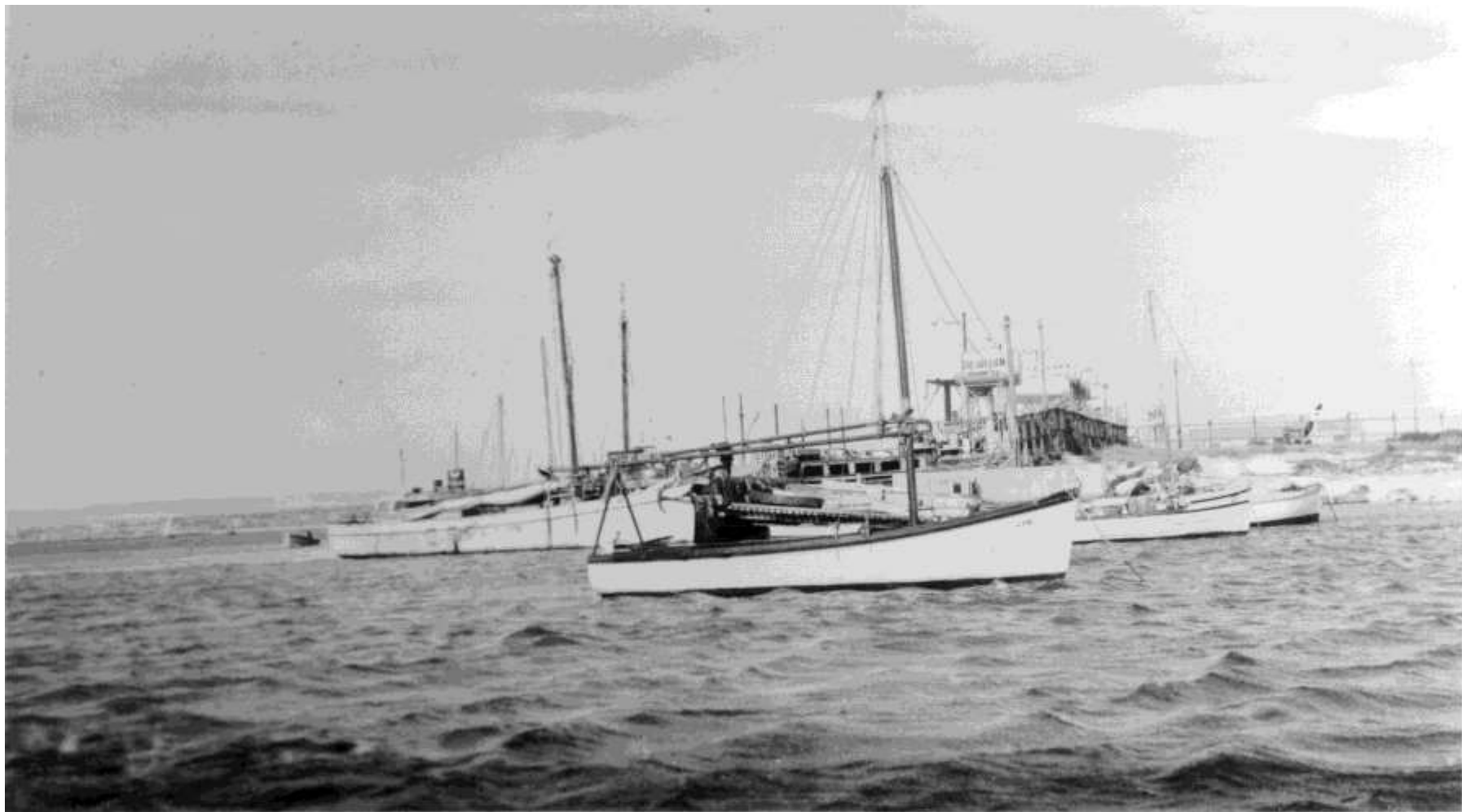




MURRAY VIEWS NO. 16. YACHTING, GERALDTON HARBOUR, W.A.



**840:** A WINTER STORM SCENE IN GERALDTON IN 1910 SHOWING SEA EROSION DAMAGE TO THE FORESHORE WHICH WAS PARTLY PROTECTED BY A TIMBER BREAKWATER 1910 **842:** AN EARLY 1930S VIEW OF THE END OF THE ESPLANADE JETTY BELIEVED TO BE ORIGINALLY CONSTRUCTED IN 1850 SEAWARD FROM GREGORY STREET 1930s **843:** TWIN FUNNEL SUCTION DREDGE GOVERNOR AT WORK ALONG THE EDGE OF THE NEW THREE BERTH CONCRETE WHARF UNDER CONSTRUCTION AT GERALDTON IN THE LATE 1920S **846:** MOST OF GERALDTON'S SMALL POPULATION TURNED OUT IN STYLE FOR THIS 1894 GATHERING ON THE ESPLANADE JETTY



MURRAY VIEWS NO. 26. FISHING BOATS, GERALDTON, W.A.



**897:** THE GERALDTON FORESHORE, PROBABLY IN THE EARLY 1920S, WELL BEFORE THE ADVENT OF THE PRESENT WHARF COMPLEX, THEN PROVIDING AN UNOBSTRUCTED VIEW UP TO THE POINT MOORE LIGHTHOUSE 1920s **968:** GERALDTON SURF CLUB AT GREY'S BAY c1947 **984:** GREY'S BAY BETWEEN SEPARATION POINT AND POINT MOORE SHOWING SURF CLUB BUILDING 1953 **986:** GERALDTON SURF CLUB'S ENTRY IN THE 1954 TRADE AND INDUSTRY FAIR AT RECREATION OVAL

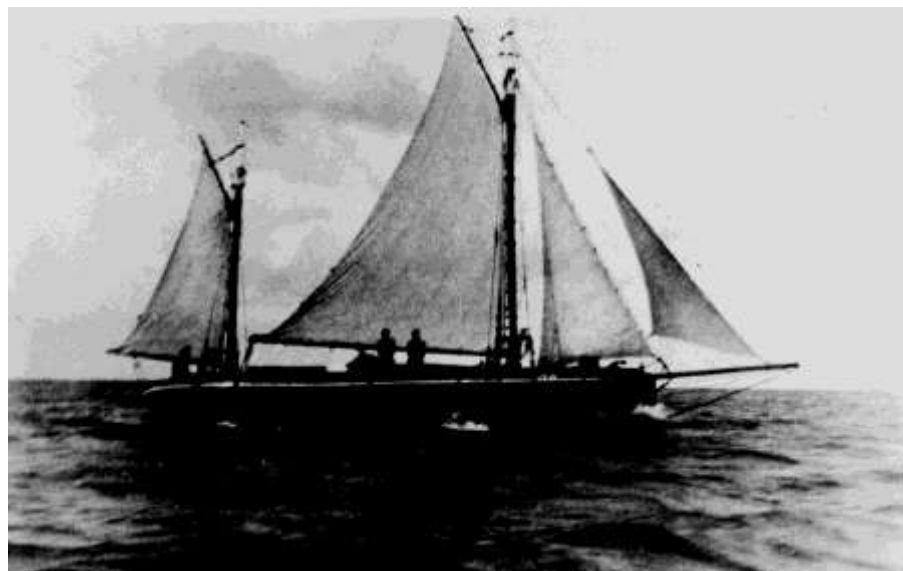
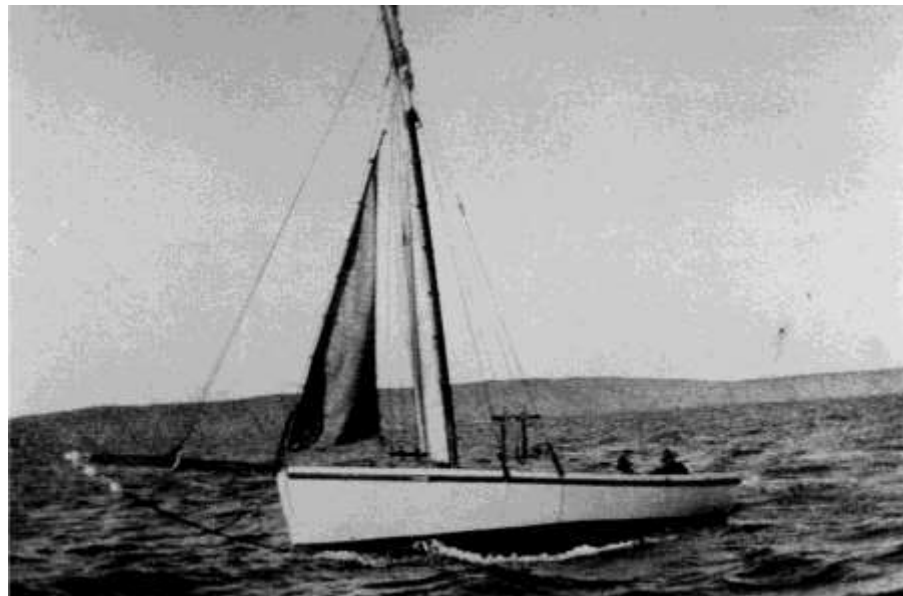
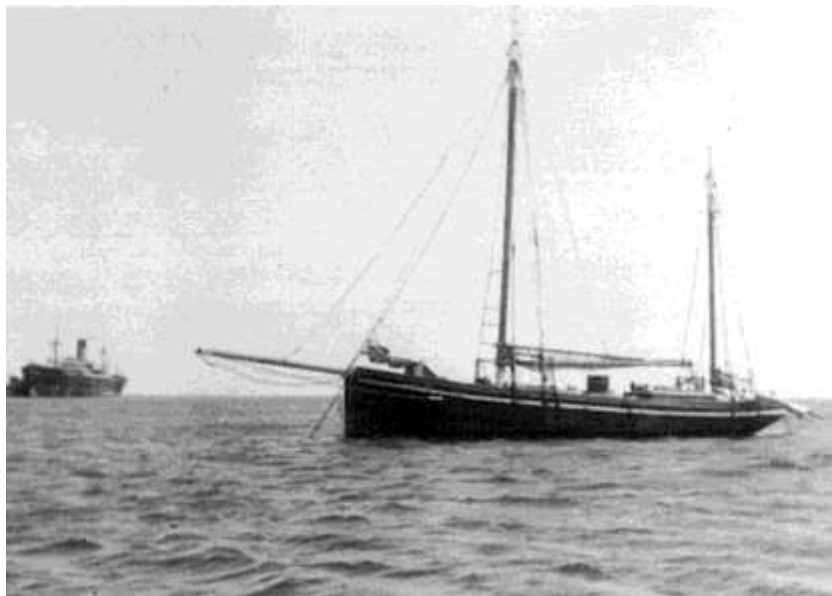


797: SHELTER SHEDS COVERED IN TEA-TREE BRUSHING WITH LATTICE ON GERALDTON'S ESPLANADE BEACH c1920s



**1721:** BOAT "MY CHOICE" IN THE HARBOUR, NOVEMBER 20 1985 **1722:** BOAT "WESTERN ODYSSEY" AT THE FISHERMAN'S WHARF IN GERALDTON, SEPTEMBER 11 1985 **1859:** GROUP OF PEOPLE ON THE ESPLANADE BEACH WATCHING ENTERTAINMENT. METHODIST CHURCH AND LIBRARY IN THE BACKGROUND **1867:** AERIAL PHOTOGRAPH TAKEN FROM OVER THE OCEAN SOUTHWARDS OVERLOOKING THE WEST END, THE HARBOUR AND GRAIN STORAGE AND OTHER STORAGE BUILDINGS WITH BACK BEACH IN THE DISTANCE 1984









845: NEW YEARS DAY IN GERALDTON IN 1920 WAS SEASIDE SPORTS DAY CENTRED ON THE ESPLANADE JETTY AND FORESHORE



**1275: 1409: 1562:** CRAYFISHERMEN UNLOADING CRAYBAYS ON A BEACH - NOT SURE WHERE 1930s **1694:** PORT DENISON NEAR DONGARA NEW TOURIST SCENIC ROAD. TAKEN BY THE GOVERNMENT PHOTOGRAPHER IN THE PERIOD 1951 - 1968

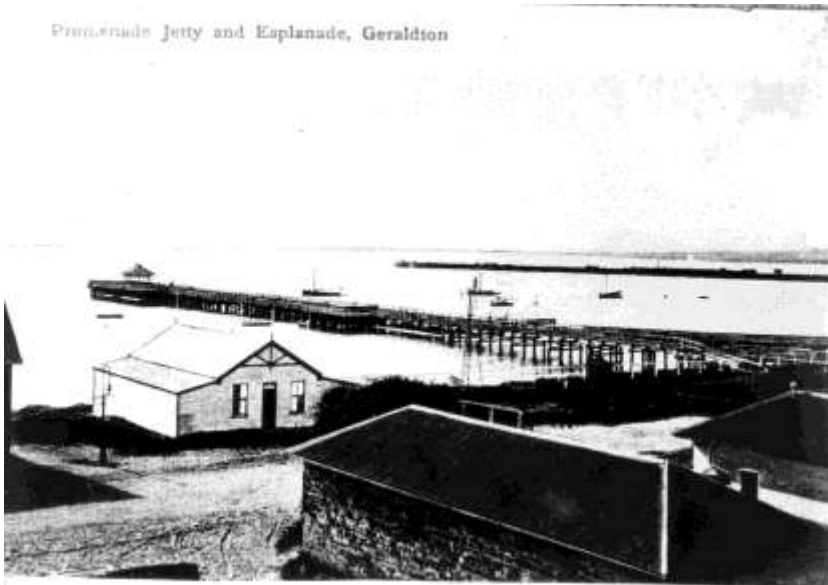


DELUCY, Photo 197

891: ESPLANADE JETTY WESTERN SIDE 1898



Promenade Jetty and Esplanade, Geraldton



990: FREIGHTER ENTERING GERALDTON HARBOUR WITH CARGO OF PHOSPHATE ROCK, TIMBER VIADUCT TO THE RIGHT, JUNE 1950 995: ESPLANADE BEACH WITH MANY PEOPLE ON THE SHORE. OLD RAILWAY BUILDING, METHODIST CHURCH IN THE BACKGROUND 1900s 1000: 1001: ESPLANADE JETTY FOOT OF GREGORY STREET WAS GERALDTON'S FIRST JETTY DEMOLISHED IN WWII



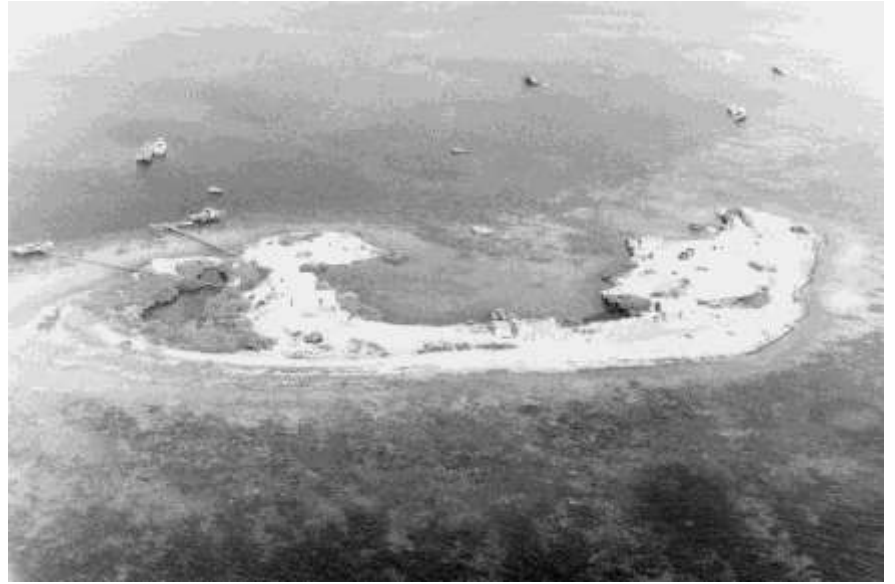
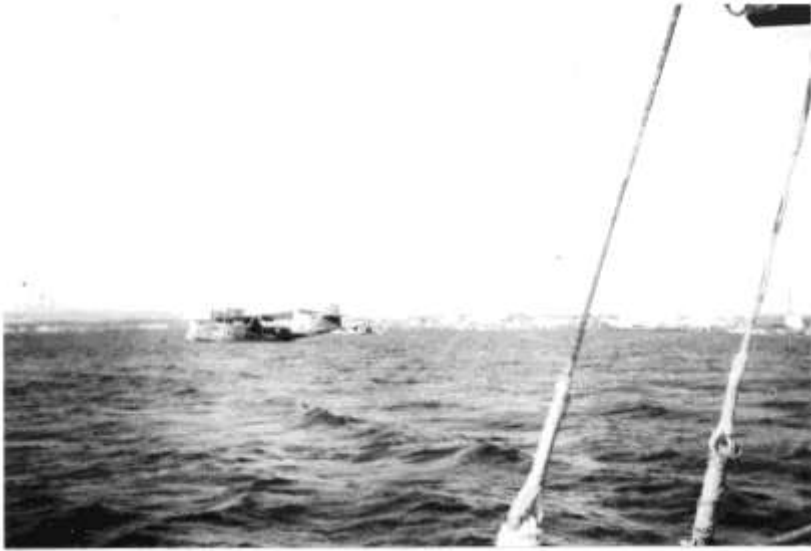
892: SWIMMING BATHS ON GERALDTON FORESHORE AT FOOT OF FITZGERALD ST



Promenade Jetty and Esplanade, Geraldton



4748: ESPLANADE JETTY SHOWING ROWING CLUB SHED IN FOREGROUND, RAILWAY JETTY IN BACKGROUND C1890S



1711: 1713: 1714: 1719: BOAT PENS GERALDTON HARBOUR, FEBRUARY 19, 1986





4776:



**1868:** GERALDTON HARBOUR LOOKING NORTHWARD UP THE COASTLINE TOWARDS BERESFORD. CARAVAN PARK IN THE LOWER RIGHT HAND CORNER , TWO LARGE SHIPS IN THE HARBOUR AND VIEWS OF THE MORESBY RANGES IN THE BACKGROUND **1876:** GERALDTON HARBOUR FEBRUARY 19, 1886 **1877:** GERALDTON WHARF FEBRUARY 19, 1886 **1923:** VISITING FORCES BOAT - POSSIBLY AMERICAN C 1970?



**1995:** GRAIN SILO CONSTRUCTION SITE WORK IN PROGRESS. SWIMMING BATHS, CATHEDRAL, STELLA MARIS AND MARINE TERRACE 1967 **1996:** AERIAL SHOT OF GERALDTON WHARF AND WEST END C 2004  
**2015:** FIRST WHEAT BOAT AT NEW GERALDTON WHARF **2041:** CRAYFISHING BOAT "SHERRY ELLEN" AT GERALDTON WHARF 1981

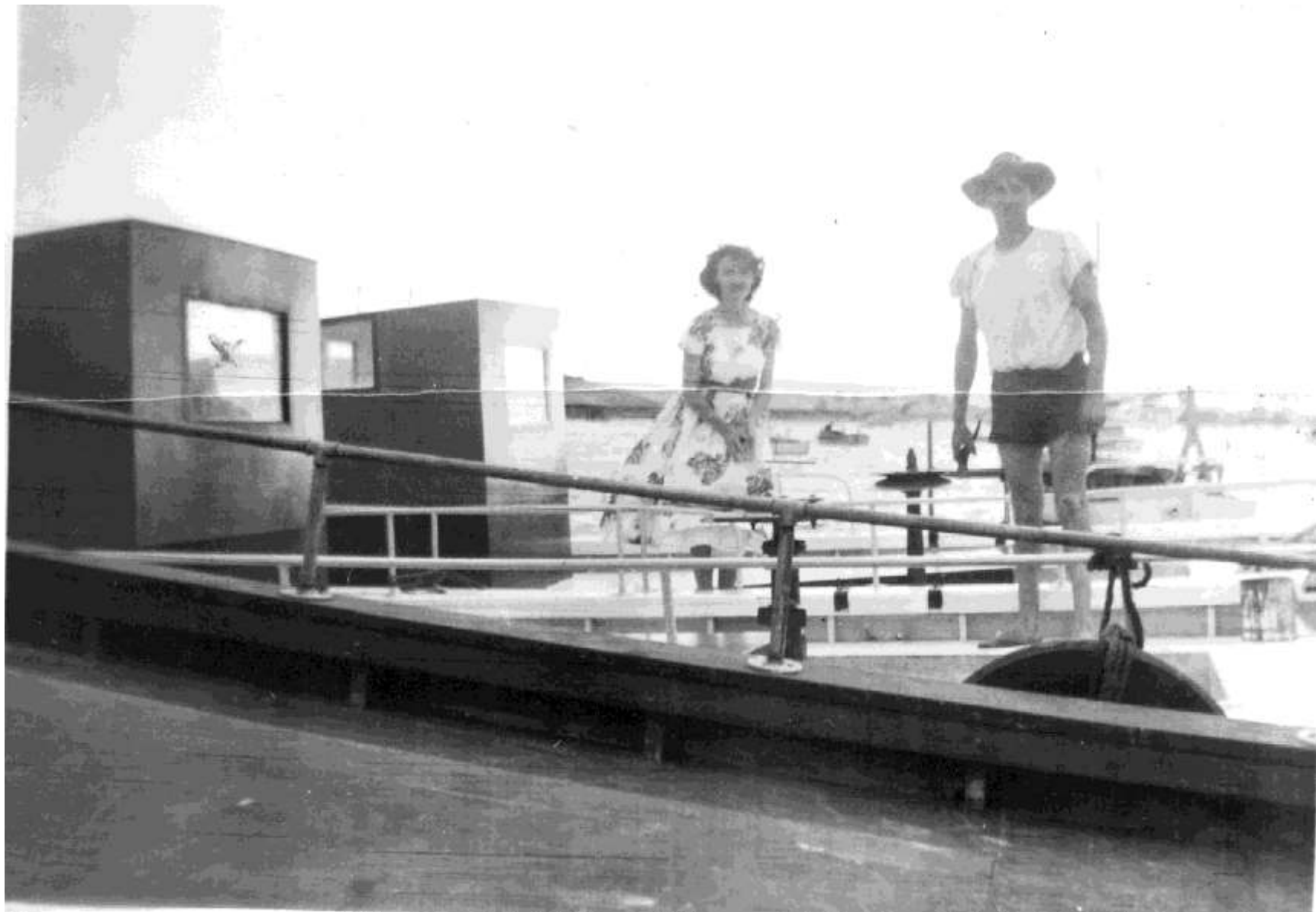


**2055:** HMAS MORESBY 1985    **2059:** OLD LONG JETTY LOOKING TOWARDS SHORE WITH SCHNAPPER BOATS UNLOADING 1929    **2082:** SWIMMING POOL AREA OF THE GERALDTON FORESHORE WITH A SHIP LEAVING THE HARBOUR IN THE BACKGROUND AND TWO SMALL SAILING BOATS DRIFTING PAST THE DOLPHIN SWIMMING PLATFORM 1958-1962    **2083:**



4966: RAILWAY JETTY WITH SS GORGON LOADING WOOL FOR LONDON, BARQUE HATHOLINEN LOADING WHEAT FOR UK, SS KURNOLPI DISCHARGING GENERAL CARGO, SS NAVINGTON LOADING WHEAT, SS KOORINGA DISCHARGING COAL. 22.12.1911











4744:



West side of Is. Phoenix



Kona Is. Phoenix





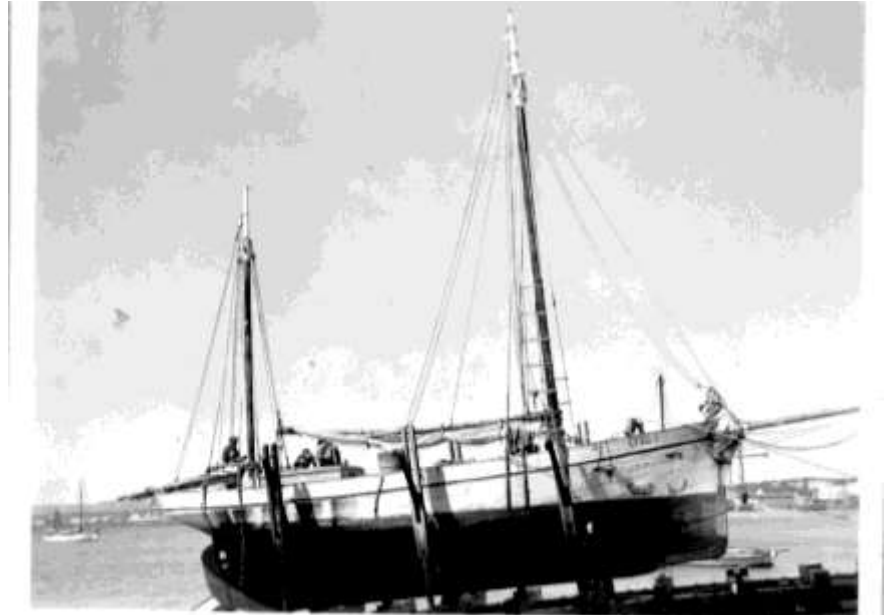
ESPLANADE, GERALDTON, W.A.



2346: 2348: 2351: EAST END OF WHARF SHOWING NO 1 BERTH WITH GANTRY. GANTRY WAS REMOVED WHEN SILOS WERE ERRECTED 1951 4744:



VIEW OF GERALDTON AND HARBOUR.



**2310:** HARBOUR 1970 **2311:** LAUNCHING OF CRAYFISHING BOAT - IRUS IN 1956. A LARGE BOAT BUILT IN GERALDTON AND OWNED BY BILL NEWBOLD WAS MADE OF MARINE PLY (NEW FOR THAT TIME) **2333:** DUMPING OF SAND FROM FLAGSTAFF HILL TO MAKE NEW WHARF 1920s **2340:** GERALDTON WHARF C 1950 - OLD MAIN SLIP EAST END c1950s









3440: 3441: 3442: 3443:























3529: 3530: 4937: BERESFORD BEACH EROSION 17/08/01 4938: BERESFORD BEACH EROSION 17/08/01



4939: BERESFORD BEACH EROSION 17/08/01 4940: BERESFORD BEACH EROSION 17/08/01 4941: BERESFORD BEACH EROSION 17/08/01 4942: BERESFORD BEACH EROSION 17/08/01





4948: BERESFORD BEACH EROSION 17/08/01 4949: BERESFORD BEACH EROSION 17/08/01 4950: BERESFORD BEACH EROSION 17/08/01 4951: BERESFORD BEACH EROSION 17/08/01



4952: BERESFORD BEACH EROSION 17/08/01 4953a: BERESFORD BEACH EROSION 17/08/01 4954: BERESFORD BEACH EROSION 17/08/01 4955: BERESFORD BEACH EROSION 17/08/01



4957: BERESFORD BEACH EROSION 17/08/01 4958: BERESFORD BEACH EROSION 17/08/01 4959: BERESFORD BEACH EROSION 17/08/01 4960: BERESFORD BEACH EROSION 17/08/01





4961: BERESFORD BEACH EROSION 17/08/01 4962: BERESFORD BEACH EROSION 17/08/01 4964: BERESFORD BEACH EROSION 17/08/01 4965: BERESFORD BEACH EROSION 17/08/01



5071: BEACH EROSION BERESFORD BLUFF POINT JULY 16 2011 5072: BEACH EROSION BERESFORD BLUFF POINT JULY 16 2011 5073: BEACH EROSION BERESFORD BLUFF POINT JULY 16 2011 5074: BEACH EROSION BERESFORD BLUFF POINT JULY 16 2011



**5075:** BEACH EROSION BERESFORD BLUFF POINT JULY 16 2011   **5076:** BEACH EROSION BERESFORD BLUFF POINT JULY 16 2011   **5077:** BEACH EROSION BERESFORD BLUFF POINT JULY 16 2011   **5078:** BEACH EROSION BERESFORD BLUFF POINT JULY 16 2011



**5079:** BEACH EROSION BERESFORD BLUFF POINT JULY 16 2011   **5080:** BEACH EROSION BERESFORD BLUFF POINT JULY 16 2011   **5081:** BEACH EROSION BERESFORD BLUFF POINT JULY 16 2011   **5083:** BEACH EROSION BERESFORD BLUFF POINT JULY 16 2011



5084: BEACH EROSION BERESFORD BLUFF POINT JULY 16 2011 5085: BEACH EROSION BERESFORD BLUFF POINT JULY 16 2011 5086: BEACH EROSION BERESFORD BLUFF POINT JULY 16 2011 5087: BEACH EROSION BERESFORD BLUFF POINT JULY 16 2011